

Medicare Severity Grouper with Medicare Code Editor Software

# **Installation and User's Manual ICD-10 Version**

For personal computers  
Software version 42.0 October 2024

PBL-013

October 2024

Oracle and Java are registered trademarks of Oracle and/or its affiliates. Other names may be trademarks of their respective owners.

If this product includes UB-04 information: Copyright 2024, American Hospital Association ("AHA"), Chicago, Illinois. Reproduced with permission. No portion of this publication may be reproduced, sorted in a retrieval system, or transmitted, in any form or by any means, electronic, mechanical, photocopying, recording or otherwise, without prior express, written consent of AHA.

# Table of Contents

<b>About this document.....</b>	<b>vii</b>
Purpose of the manual .....	vii
Information in the manual .....	vii
 <b>Chapter 1: Introduction .....</b>	 <b>9</b>
Program versions.....	9
 <b>Chapter 2: Installing the software .....</b>	 <b>11</b>
Hardware and system requirements.....	11
Pre-installation note .....	11
Installing the current software product .....	11
Description files .....	12
Installed program functions.....	13
<i>Accessing the functions</i> .....	13
Uninstalling grouper versions.....	13
 <b>Chapter 3: Interactive data processing .....</b>	 <b>15</b>
Data entry .....	15
Grouper selection .....	15
Steps for entering data .....	16
Data entry fields.....	18
Data entry menu options .....	25
Data entry command buttons.....	25
Interactive error messages .....	26
Program output .....	27
Viewing interactive output .....	30
Exiting the report window .....	30
Output report fields .....	30
Output report menu options .....	34
Output report command button.....	35
Program edits .....	35
 <b>Chapter 4: Batch processing .....</b>	 <b>39</b>
Steps in batch processing .....	40
Input file format .....	42
Command line processing options .....	47
Command line examples.....	48
<i>Example 1</i> .....	48
<i>Example 2</i> .....	48

<i>Example 3</i> .....	49
Output file formats .....	49
Formatted output (-o option) .....	49
Upload file (-u option) .....	49
Working with batch output .....	62
Viewing output .....	62
Printing output .....	63
Renaming a file .....	63
Batch processing error messages .....	63
Log files .....	66
Viewing the file .....	67
Printing the file .....	67
Renaming the file .....	67
 <b>Chapter 5: Accessibility Features</b> .....	<b>69</b>
System requirements .....	69
 <b>Appendix A: Current MDCs and DRGs</b> .....	<b>73</b>
List of DRGs with cost weights .....	75
 <b>Index</b> .....	<b>109</b>

# ICD-10

## Version 42.0

This Medicare Severity (MS) Grouper with Medicare Code Editor (MCE) ICD-10 software contains both ICD-9-CM and ICD-10 codes (see "Program versions (page [9](#))"). This software is intended to give users the opportunity to group and edit claims using ICD-9-CM, ICD-10-CM and ICD-10 PCS codes based on discharge date. If the discharge date is out of range for this component, the program will default to the current version.



# About this document

## Purpose of the manual

This manual is written to assist health information management professionals with an average level of computer knowledge in installing and using the Medicare Severity Grouper with Medicare Code Editor (MSG/MCE) software in a Microsoft® Windows® environment on a personal computer.

The documentation assumes you are familiar with Diagnosis Related Groups (DRGs) methodology for processing medical claims, and with MCE software's evaluation of patient data to help identify possible errors in coding.

## Information in the manual

The manual begins with a brief introduction describing the functionality of MSG/MCE software. You are then given instructions to install the software, followed by chapters on processing claims data interactively and in batch. There is an Accessibility Features chapter for the visually impaired to assist them with interactive claim processing. An appendix is included that lists the Major Diagnostic Categories (MDCs) and DRGs in the current MS grouper with the DRG-associated cost weights.

Sequential steps in the manual to select an option use the “greater than” symbol. For example, rather than telling you to first go to the Start menu, select Programs, select Accessories, and finally select Notepad, that instruction would appear as:

- ❑ From the Start menu, select Programs > Accessories > Notepad.



# Chapter 1: Introduction

The Medicare Severity Grouper with Medicare Code Editor (MSG/MCE) software edits medical record data to help identify coding errors and inconsistencies between clinical data and coding.

The software:

- Assigns the medical record to a Major Diagnostic Category (MDC) and a Diagnosis Related Group (DRG).
- Displays clinical edits that identify inconsistencies after evaluating a patient's principal diagnosis, any secondary diagnoses, surgical procedures, age, length of stay, sex, and discharge status for possible errors.

**Note:** If some of these data items are missing, inaccurate results may occur.

- Displays the cost weight associated with the assigned DRG for each patient record.
- Processes medical record data either from a MS-DOS batch file or interactively in a Microsoft® Windows® environment.

## Program versions

This release of MS grouper with MCE software for Windows-based personal computers supports the versions shown in the following table. To process a claim using a CMS grouper prior to version 16.0, you must use the earlier version of CMS Grouper with MCE software.

**Please note:** In order to be in synch with the MS Grouper version number, there is not a version 29 of the MCE.

**Table 1. Grouper versions in the program**

MS grouper version	MCE version	Effective date range
42.0 (ICD-10)	42.0	10/01/2024–03/31/2025
41.1 (ICD-10)	41.1	04/01/2024–09/30/2024
41.0 (ICD-10)	41.0	10/01/2023–03/31/2024
40.1 (ICD-10)	40.1	04/01/2023–09/30/2023
40.0 (ICD-10)	40.0	10/01/2022–03/31/2023
39.1 (ICD-10)	39.1	04/01/2022–09/30/2022
39.0 (ICD-10)	39.0	10/01/2021–03/31/2022
38.1 (ICD-10)	38.1	01/01/2021–09/30/2021
38.0 (ICD-10)	38.0	10/01/2020–12/31/2020

<b>MS grouper version</b>	<b>MCE version</b>	<b>Effective date range</b>
37.2 (ICD-10)	37.2	08/01/2020–09/30/2020
37.1 (ICD-10)	37.1	04/01/2020–07/31/2020
37.0 (ICD-10)	37.0	10/01/2019–03/31/2020
36.0 (ICD-10)	36.0	10/01/2018–09/30/2019
35.0 (ICD-10)	35.0	10/01/2017–09/30/2018
34.0 (ICD-10)	34.0	10/01/2016–09/30/2017
33.0 (ICD-10)	33.0	10/01/2015–09/30/2016
32.0	32.0	10/01/2014–09/30/2015
31.0	31.0	10/01/2013–09/30/2014
30.0	30.0	10/01/2012–09/30/2013
29.0	28.0	10/01/2011–09/30/2012
28.0	27.0	10/01/2010–09/30/2011
27.0	26.0	10/01/2009–09/30/2010
26.0	25.0	10/01/2008–09/30/2009
25.1	24.1	04/01/2008–09/30/2008
25.0	24.0	10/01/2007–03/31/2008
24.0	23.0	10/01/2006–09/30/2007
23.0	22.0	10/01/2005–09/30/2006
22.0	21.0	10/01/2004–09/30/2005
21.0	20.0	10/01/2003–09/30/2004
20.0	19.0	10/01/2002–09/30/2003
19.0	18.0	10/01/2001–09/30/2002
18.0	17.0	10/01/2000–09/30/2001
17.0	16.0	10/01/1999–09/30/2000
16.0	15.1*	07/01/1999–09/30/1999
16.0	15.0	10/01/1998–06/30/1999

There are specific rules for the discharge date field as it relates to the discharge status and the version of software used to process a claim. See the "Data entry fields" table (page [19](#)) for details.

# Chapter 2: Installing the software

The Medicare Severity Grouper with Medicare Code Editor (MSG/MCE) software is completely self-installable on a stand-alone personal computer (PC). The installation must be performed by a person with Microsoft® Windows® administrative status.

## Hardware and system requirements

- Single PC requirements:  
Operating System: all Microsoft supported versions of Windows

**Note:** This software is not intended to operate in a networked environment.

## Pre-installation note

I10 version users do not need to uninstall previous MSG MCE software. This version will work in parallel with other MSG MCE versions.

## Installing the current software product

To install the current version of MS grouper with MCE software, follow the steps below. The installation automatically checks for the appropriate operating system, screen resolution, free disk space, administrator status, and previously installed MSG/MCE software versions. If any requirement is not met, you will see a message stating the nature of the problem during the installation. Correct the problem and begin the installation again. At any time, you can click Cancel to end the installation process.

1. Close all unnecessary applications running on your computer.
2. Download the MSGMCE PC zip file to your desktop or a local drive.
3. Unzip the file that was downloaded.
4. Double-click on MSGMCEInstaller.exe to start the software installation.

The installation process begins and you see the Welcome screen.

**Note:** If you see a User Account Control or Security Policy warning message pop up, select Yes or Allow to continue with the install.

5. On the Welcome screen, read the setup information, then select Next to continue.
6. Review the information on the Read Me screen, then select Next to continue.
7. On the Choose Install Location screen, specify the folder where you want to install the product.

The default folder is C:\Program Files\MSG MCE SOFTWARE I10.

- To choose a different folder, select Browse... and browse to the folder you want to use.
  - If you want to restore the default folder after making a change, select Restore Default Folder.
8. After choosing an install folder, select Install.
  9. On the Install Complete screen, select Finish.

**Note:** Some PCs may display a Program Incompatibility Assistant screen to verify if the program installed correctly, you may close this screen.

## Description files

Files containing descriptions for diagnosis and procedure codes, DRGs, and MDCs are included as part of the installation process. The files, listed in the following table, are located in the Descriptions directory off the product directory. In the file names, xxx represents the current software version number.

**Table 2. Description files**

File name	Contains descriptions for...
icd9dx.vxxx	ICD-9-CM diagnosis codes
icd9sg.vxxx	ICD-9-CM procedure codes
icd10dx.vxxx	ICD-10-CM diagnosis codes
icd10sg.vxxx	ICD-10-PCS procedure codes
icd9msdrg3.vxxx	ICD-9 3-digit DRGs
icd10msdrg3.vxxx	ICD-10 3-digit DRGs
icd9msdrg4.vxxx	ICD-9 4-digit DRGs
icd10msdrg4.vxxx	ICD-10 4-digit DRGs
msmdc.vxxx	MDCs

**Note:** Effective with v26.0, the titles for the DRG and MDC files were renamed to msdrg3.vXXX, msdrg4.vXXX and msmdc.vXXX. The “ms” prefix replaced the “hf” prefix.

## Installed program functions

The installation places the three functions, shown in the following table, in the MSG MCE SOFTWARE I10 folder of Programs in the Start menu on your PC.

**Table 3. Installed program functions**

Function	When to select the function
MSGMCE Interactive	Select to display the MS Grouper with Medicare Code Editor Software interactive data entry window.
MS-DOS prompt	Select to display a window containing a MS-DOS prompt to process records with batch processing.  <b>Note:</b> If the MS-DOS prompt window does not appear when you select this function, verify that the environment path includes C:\WINDOWS\system32. If necessary, add it to the path.
Readme	Select to read product-specific information for the current release.

### Accessing the functions

To access any of the functions in the previous table:

1. Go to the Start menu.
2. Select All Programs > MSG MCE SOFTWARE I10.
3. Select the appropriate function.
  - For information on interactive claims processing, go to "Interactive data processing" (page [15](#))
  - or
  - For information on batch processing, go to "Batch processing" (page [39](#)).

## Uninstalling grouper versions

The following instructions explain how to uninstall this software.

1. Launch the uninstall process from the Windows Control Panel or from the product directory.

- a. To launch the uninstall process from the Control Panel
    1. Select Start > Control Panel > Programs > Programs and Features.  
(Windows 7 users, select Start > Control Panel > Programs and Features.)
    2. From the list of installed products, select MSG MCE SOFTWARE I10.
    3. Right-click, then select Uninstall/Change.
  - b. To launch the uninstall process from the product directory
    1. Locate the product directory. The default directory is C:\Program Files\MSG MCE SOFTWARE I10.
    2. Double-click Uninstall.exe.
- Note:** If you see a User Account Control warning message, select Yes to continue with the uninstall.
2. On the Welcome screen, read the uninstall information, then select Next to continue.
  3. On the MSG MCE Software Uninstall screen, read the message summarizing the uninstall process, then select Uninstall.
  4. On the Uninstall Complete screen, select Finish.

# Chapter 3: Interactive data processing

The Medicare Severity Grouper with Medicare Code Editor (MSG/MCE) software processes medical record data by two methods:

- Interactively entering one record at a time;
- By batch, processing data from a group of records entered in an MS-DOS file.

This chapter discusses the interactive method of claim processing. Interactive processing enables you to correct invalid data or codes at the time a record is processed. This method uses a Microsoft® Windows® environment to enter data and view the output.

Sections in this chapter give you information on:

- Data entry, including field descriptions, information on menus and command buttons on the data entry window, and error messages.
- Program output, including an example output report and explanation of output fields, information on menus and command buttons on the data output window.
- Descriptions of the edits in the MSG/MCE software program.

## Data entry

This section provides field information and valid entry ranges where they exist, to assist in data entry. You will be able to navigate through the data entry window and perform functions, such as editing fields or copying text. Error messages that can occur during data entry are listed and explained.

### Grouper selection

As you enter data, the program automatically selects the appropriate grouper for processing using the discharge date entered from the patient's medical record. For example, a discharge date of 11/14/2010 will call MS grouper 28 with an effective date range of 10/01/2010–09/30/2011 to process the claim.

If the discharge date of the patient is not within an effective date range for any installed grouper, or if the discharge date is missing, the program defaults to the most current version installed. In that case, this message is displayed on the output report:

MS-DRG Grouper version xx.xx(<current version effective date>)USED BY  
DEFAULT.

**Note:** Because of the retroactivity in the Medicare Code Editor a discharge date is needed to elicit edits. If there is no discharge date entered, the Medicare Code Editor will not be called.

## Steps for entering data

Follow these steps for interactive data entry:

1. From the Start menu, select All Programs > MSG MCE SOFTWARE I10 > MSGMCE Interactive.

The About box window appears briefly followed by the data entry (or input) window titled, MS Grouper with Medicare Code Editor Software Vxx.x.

The data entry window is organized into three sections:

- Patient Information
- Patient Stay Information
- Codes

The cursor will be positioned at the first field. To enter data, you can tab to move through fields. Use Shift+Tab to move back to the previous field. When in the codes table, text will appear below the code tables displaying the location of the cursor.

Annotations on the left side of the image:

- Title bar →
- Menus →
- Sections →
- Command buttons →

Figure 1: Data entry window

2. Enter data into the appropriate fields.

If you need assistance when working on the data entry window, the following table contains information to help you.

**Table 4. Help for interactive data entry**

What do you want to do?	Help
Find specific data entry field information	See the "Data entry fields" table (page <a href="#">17</a> ).
Work with text on the window	Use standard Windows options (e.g., cut, copy, paste).
Make a menu selection	See the "Data entry menu items" table (page <a href="#">25</a> ).
Correct an entry in the patient information or patient stay information section	Simply highlight and overwrite the entry with the correct information, or Tab to the field and use the backspace key to delete the content, then enter the correct information.
Delete a code entry row in the codes section	For the Admit Dx, tab to the field and use the backspace key to delete the content. For other codes, tab to the field (or use the up/down arrow key), then press Delete to remove the entry.  For more information, see the Diagnoses and Procedures field descriptions in the "Data entry fields" table (page <a href="#">23</a> ); also see the "Data entry menu items" table (page <a href="#">25</a> ), and the "Data entry command buttons" table (page <a href="#">25</a> ) for additional information on the Delete and Clear functions.
View/access a long field description or edit messages associated with a code	The column can be re-sized to view descriptions/edits that extend past the set column size. When using JAWS, the description and edits fields can be accessed using the right arrow while in a Code row.
Eliminate an error message	Select OK to close the dialog box and correct the problem. See the "Interactive error messages" table (page <a href="#">26</a> ) for a list of error messages that can occur, with their descriptions.

- When you have completed data entry for a record, select Report to view the processed record.

You can select Report by clicking on it, by tabbing to it and pressing Enter, or by pressing ALT+R.

"Viewing interactive output" (page [30](#)) contains output information, including printing of the report. An example of an output report is shown in the "Program output" section (page [27](#)).

## Data entry fields

The following tables describe the fields on the data entry window. An asterisk (\*) indicates a required field.

**Table 5. Data entry fields - patient information**

Field name	Length	Description
Name	31	Name of the patient. Alphanumeric. First and last names can be entered in any order.
Medical record number	13	Patient's medical record number. Alphanumeric.
Birth date	10	Birth date of the patient. Format: mm/dd/yy, mm/dd/yyyy, mmddyyyy, or mmddyy.  A dash (-), slash (/), or period is accepted to separate any digit from 0–9. The program automatically converts a two-digit year to a four-digit display. If the patient is more than 99 years of age, a four-digit year is required. A birth date prior to 01/01/1900 cannot be entered.  The birth and admit dates are used to calculate the age of the patient; calculated age overrides entered age.
Age in years*	3	Age of the patient. Valid values: 0–124 years. Age can be an entered or a calculated value. Calculated age (admit date minus birth date) takes precedence over entered age. For more information, see the Birth date field description.
Sex*	1	Patient gender. Select a value from the drop-down list: 0, u, U = Unknown 1, m, M = Male 2, f, F = Female

**Table 6. Data entry fields - patient stay information**

Field name	Length	Description
Account number	17	Patient account number. Alphanumeric.
Primary payer	2	Primary payer for the service provided. Select a value from the drop-down list: 01: Medicare (default) 02: Medicaid 03: Title V 04: Other Govt 05: Work Comp 06: Blue Cross 07: Insur Co 08: Self Pay 09: Other 10: No Charge
Admit date	10	Date of admission to the facility. Format: mm/dd/yy, mm/dd/yyyy, mmddyyyy, or mmddyy. A dash (-), slash (/), or period is accepted to separate any digit from 0–9. The program automatically converts a two-digit year to a four-digit display. An admit date prior to 01/01/1900 cannot be entered.  The birth and admit dates are used to calculate the age of the patient; for more information, see the Birth date field description. The admit and discharge dates are used to calculate length of stay (LOS); calculated LOS overrides entered LOS. Calculated LOS must be in the range of 00000 to 45291 days.

Field name	Length	Description
Discharge date	10	<p>Date of discharge from the facility. Format: mm/dd/yy, mm/dd/yyyy, mmddyyyy, or mmddyy.</p> <p>A dash (-), slash (/), or period is accepted to separate any digit from 0–9. The program automatically converts a two-digit year to a four-digit display. A discharge date prior to 01/01/1900 cannot be entered.</p> <p>The discharge date determines the grouper version called to process the record. The discharge date also determines which discharge status codes are displayed. For this reason, we recommend entering the discharge date before discharge status. If there are no groupers available for the discharge date entered, the product automatically defaults to the latest grouper version available and the output report includes a USED BY DEFAULT notation (<i>see also Discharge status, below</i>).</p> <p>The discharge and admit dates are used to calculate LOS; for more information, see the Admit date field description.</p>
Discharge status*	2	<p>Status of discharge. Enter the discharge date before entering the discharge status so that the appropriate discharge status codes are displayed in a drop-down list (<i>see also Discharge date, above</i>). When a discharge status is selected first, and is invalid for a discharge date entered, the Discharge Status selection is cleared.</p> <p>All available discharge status codes are listed below.</p> <p>01 = Home or self-care</p> <p>02 = Disch/trans to another short term hosp</p> <p>03 = Disch/trans to SNF</p> <p>04 = Disch/trans to ICF (valid until 09/30/09)</p> <p>04 = Custodial/supportive care (revised 10/01/09)</p> <p>05 = Disch/trans to another type of facility (valid until 03/31/08)</p> <p>05 = Disch/trans to a designated cancer center or children's hospital (revised 04/01/08)</p> <p>06 = Care of home health service</p> <p>07 = Left against medical advice</p>

Field name	Length	Description
		08 = Home IV service (valid until 09/30/2005) 20 = Died 21 = Disch/trans to court/law enforcement (added 10/01/09) 30 = Still a patient 43 = Fed hospital (added 10/01/03) 50 = Hospice-home 51 = Hospice-medical facility 61 = Swing Bed (added 10/01/2001) 62 = Rehab fac/unit (added 10/01/2001) 63 = LTC hospital (added 10/01/2001) 64 = Nursing facility–Medicaid certified (added 10/01/02) 65 = Psych hosp/unit (added 10/01/03) 66 = Critical access hospital (added 10/01/05) 69 = Designated Disaster Alternative Care Site (added 10/01/13) 70 = Disch/trans to another type of health care institution not defined elsewhere in the code list (added 04/01/08) 71 = OP services-other facility (10/01/01–09/30/03 only) 72 = OP services-this facility (10/01/01–09/30/03 only) 81 = Home-Self care w Planned Readmission (added 10/01/13) 82 = Short Term Hospital w Planned Readmission (added 10/01/13)

Field name	Length	Description
		83 = SNF w Planned Readmission (added 10/01/13) 84 = Cust/supp care w Planned Readmission (added 10/01/13) 85 = Canc/child hosp w Planned Readmission (added 10/01/13) 86 = Home Health Service w Planned Readmission (added 10/01/13) 87 = Court/law enfrc w Planned Readmission (added 10/01/13) 88 = Federal Hospital w Planned Readmission (added 10/01/13) 89 = Swing Bed w Planned Readmission (added 10/01/13) 90 = Rehab Facility/ Unit w Planned Readmission (added 10/01/13) 91 = LTCH w Planned Readmission (added 10/01/13) 92 = Nursg Fac-Medicaid Cert w Planned Readmiss (added 10/01/13) 93 = Psych Hosp/Unit w Planned Readmission (added 10/01/13) 94 = Crit Acc Hosp w Planned Readmission (added 10/01/13) 95 = Oth Institution w Planned Readmission (added 10/01/13)
LOS (length of stay)	5	Number of days the patient was in the facility. Valid entries: 00000–45291. LOS can be user-entered, or calculated when admit and discharge dates have been entered. For more information, see the Admit date field description.
Optional information	72	Comments or other user-specified information. Alphanumeric.

**Table 7. Data entry fields - codes**

Field name	Length	Description
Admit Dx*	7	<p>Enter diagnosis codes without decimals. Lower case is automatically converted to upper case. The code description is displayed as you type the code. If the code is not valid, "No description found" displays in the description field.</p> <p><b>Note:</b> The interactive program accepts only diagnosis codes of up to five digits for ICD–9 processing and seven digits for ICD–10 processing.</p>
Apply HAC (hospital-acquired condition) logic	1	<p>The checked box indicates that HAC logic will be applied. By default, this box will always be checked.</p>
Diagnoses: PDX (principal diagnosis)* Diagnoses 2–25	7	<p>Enter diagnosis codes without decimals. Lower case is automatically converted to upper case. The code description and any applicable edits are displayed as you type the code. A maximum of 25 codes can be entered. Pressing the Tab key at the first blank diagnosis code field moves focus to the first blank procedure code field.</p> <p>The Description and Edits fields are display only. A maximum of four edits per code can be displayed. See the "Program edits" table (page <a href="#">35</a>) for a list of code edits.</p> <p>If you enter a secondary diagnosis and later delete it, the program moves up the diagnoses following the deleted row, if there are any, to fill in the empty row. This behavior does not apply to the principal diagnosis.</p> <p><b>Note:</b> The interactive program accepts only diagnosis codes of up to five digits for ICD–9 processing and seven digits for ICD–10 processing.</p>

Field name	Length	Description
Present on Admission Indicators	1	<p>Enter one of the following Present on Admission Indicators, required for a diagnosis other than the admit diagnosis:</p> <p>Y = Yes, present at the time of inpatient admission</p> <p>N = No, not present at the time of inpatient admission</p> <p>W = Clinically unable to determine if present at the time of admission</p> <p>U = Insufficient documentation to determine if present at the time of admission</p> <p>1 = Exempt from POA reporting</p> <p>Blank = Exempt from POA reporting</p> <p><b>Note:</b> With JAWS running, if a user enters a secondary diagnosis code and tabs to the POA field and it is blank, if a value has been entered in a previous POA cell, that previous POA value may be read.</p>
Procedures: PP (principal procedure) Procedures 2–25	7	<p>Enter procedure codes without decimals. The code description and any applicable edits are displayed as you type the code. A maximum of 25 codes can be entered. Pressing the Tab key at the first blank procedure code field moves focus to the Report button.</p> <p>The Description and Edits fields are display only, but can be accessed using the right arrow. A maximum of four edits per code can be displayed. See "Program edits" table (page <a href="#">37</a>) for a list of code edits.</p> <p>If you enter a procedure and later delete it, the program moves up the procedures following the deleted row, if there are any, to fill in the empty row.</p> <p><b>Note:</b> The interactive program accepts procedure codes of up to four digits for ICD-9 processing and seven digits for ICD-10 processing.</p>

## Data entry menu options

The following table describes the menu options on the data entry window. Refer to the Function column to locate the task you want to perform. Accelerator keys allow you to bypass a menu and activate a function more quickly.

**Table 8. Data entry menu items**

Function	Description	Accelerator keys	Menu-based keystrokes
New	Displays the demographics tab cleared of all previously entered information.	Ctrl+N	On Patient menu (Alt + P), select New (key = N)
Exit	Exits the program.	Alt+F4	On Patient menu (Alt + P), select Exit (key = X)
Cut	Removes the selected text and copies it to the clipboard.	Ctrl+X	On Edit menu (Alt + E), select Cut (key = T)
Copy	Copies the selected text to the clipboard.	Ctrl+C	On Edit menu (Alt + E), select Copy (key = C)
Paste	Inserts contents of the clipboard at the insertion point.	Ctrl+V	On Edit menu (Alt + E), select Paste (key = P)
Delete	Deletes the selected text, or the selected row in the Codes section.	Delete	On Edit menu (Alt + E), select Delete (key = D)
About	Displays the About box with current version information.	n/a	On Help menu (Alt + H), select About (key = A)

## Data entry command buttons

The following table describes the command buttons on the data entry window. Use the Function column to locate the task you want to perform.

**Table 9. Data entry command buttons**

Button	Function
Clear	Clears all diagnosis (including admit dx) and procedure code entries and their descriptions, and any associated edits.

Button	Function
Report	<p>Displays a pre-formatted output report that can be printed or saved. Alt+R also displays reports.</p> <p>An error message displays in place of the report when any required fields are missing or invalid; correct the error, then tab to Report or press Alt+R to open the report again.</p> <p>Data output is discussed in "Program output" (page <a href="#">27</a>).</p>

## Interactive error messages

The following table is an alphabetical list of the error messages that can occur during data entry. The messages help prevent invalid or incorrect entries.

**Table 10. Interactive error messages**

Message	Description
[Admit date] [Birth date] [Discharge date] is invalid. Dates must be entered in this format: mm/dd/yyyy, mm/dd/yy, mmddyyyy, mmddyy, mm.dd.yyyy, mm.dd.yy, mm-dd-yyyy, or mm-dd-yy.	The value entered for the month, day or year is outside the valid range. See the "Data entry fields" table (page <a href="#">19</a> ) for more information on date fields.
Admit date cannot be after Discharge date.	The program checks for logical sequencing of dates.
Admit date cannot precede 01/01/1900.	A valid date is on or after 01/01/1900.
Admit date cannot precede Birth date.	The program checks for logical sequencing of dates.
Age is invalid. Calculated age must be between 0 and 124 years.	The valid range for age in years is 0–124.
Birth date cannot be after Admit date.	The program checks for logical sequencing of dates.
Birth date cannot be after current date	The program checks for logical sequencing of dates
Birth date cannot be after Discharge date.	The program checks for logical sequencing of dates.
Birth date cannot precede 01/01/1900.	A valid date is on or after 01/01/1900.
Discharge date cannot precede 01/01/1900.	A valid date is on or after 01/01/1900.
Discharge date cannot precede Admit date.	The program checks for logical sequencing of dates.

Message	Description
Discharge date cannot precede Birth date.	The program checks for logical sequencing of dates.
Discharge status invalid for discharge date entered.	When the discharge status is entered before the discharge date, and the discharge status is invalid for the entered discharge date, this message is displayed. To avoid this message, enter the discharge date before selecting a discharge status.
Length of stay (LOS) is invalid. Calculated length of stay must be between 00000 and 45291 days.	The entered or calculated LOS exceeds the upper limit allowed for the field.
The following required fields are missing and/or invalid: Age in years Sex Discharge status Admit Dx PDX	You cannot produce an output report when a required field contains invalid data or is blank. The program sets the focus to the first invalid or blank required field.

## Program output

This section describes the output resulting from the processing of the data entered interactively into the program. The output is displayed on your computer screen and can be printed, copied, or saved to a text file.

Reports are saved singly, that is, the program does not append them. If you want a file of multiple reports, you can create one by copying several output reports, one at a time, and pasting them into a text file.

Once data is erased from the data entry window and the Report window closed, the output is no longer available unless you re-enter the data.

This section also contains an illustration of an output report and information on the report fields. Program edits are explained in the following section.

To display the output report, (page [29](#)) select Report by clicking on it, by tabbing to it and then pressing Enter, or by pressing Alt+R. You can press Alt+C at any time to close the report.

When using JAWS, when the report first opens you are told the number of lines before the report is read.

A sample report is shown in the following figure and contains the following elements:

- A title line giving the version of the grouper that processed the claim.
- Patient information copied from the entries you made on the data entry window.
- Grouper information: the assigned MDC, Final DRG, and Final DRG cost weight.
- Hospital-acquired condition (HAC) status message.
- Clinical information: a listing of the entered diagnosis and procedure codes with their English descriptions.
- Present on Admission (POA) indicators for diagnosis codes, as applicable.
- Edits for diagnosis and procedure codes, as applicable.
- Initial DRG.

<b>Title</b>	
<b>Line</b>	MS-DRG Assignment with Medicare Code Editor vXX.X
<b>Patient Information</b>	<p>Patient Name: Jane Smith      Medical Record Number: 1234567</p> <p>Admit Date: 10/01/2016    Discharge Date: 10/06/2016      Birth Date: 09/09/1943</p> <p>Optional Information:</p> <p>Patient Account Number: 891011</p> <p>Age in Years: 73      Sex: Female</p> <p>Discharge Status: 01 Home or self-care</p>
<b>Grouping Information</b>	<p>MDC: 10 ENDOCRINE, NUTRITIONAL &amp; METABOLIC DISEASES &amp; DISORDERS</p> <p>Final</p> <p>DRG: 638 Diabetes w CC</p> <p>Cost Weight: 00.8382</p> <p>MS-DRG Grouper version 34.0 (October 1, 2016) used.</p> <p>HAC Status: Not Applicable.</p>
<b>Clinical Information</b>	<p>Admitting Diagnosis:</p> <p>E109    Type 1 diabetes mellitus without complications</p> <p>Principal Diagnosis:</p> <p>E109    Type 1 diabetes mellitus without complications (DRG)</p> <p>POA: Yes, present at the time of inpatient admission</p> <p>Secondary Diagnoses:</p>
<b>POA Indicator</b>	<p>E109    Type 1 diabetes mellitus without complications</p> <p>POA: Yes, present at the time of inpatient admission</p> <p>Edit: Duplicate of principal diagnosis (MCE)</p> <p>N390    Urinary tract infection, site not specified (CC) (DRG)</p> <p>POA: No, not present at the time of inpatient admission</p> <p>I10      Essential (primary) hypertension</p> <p>POA:</p> <p>N469    Male infertility, unspecified</p> <p>POA: Yes, present at the time of inpatient admission</p>
<b>Edit</b>	<p>Edit: Sex conflict (MCE)</p> <p>Principal Procedure:</p> <p>No principal procedure.</p> <p>Secondary Procedures:</p> <p>No secondary procedures.</p> <p>Initial</p> <p>DRG: 638 Diabetes w CC</p> <p>Primary Payer:    01 Medicare</p> <p>Actual LOS: 5</p> <p>Patient Summary Edits:</p> <p>MCE pre-payment errors only</p>

□

Figure 2: Sample output report

## Viewing interactive output

Output report fields are described in the "Interactive output report fields" table (page [30](#)).

Use the menu options described in the "Output report menu options" table. (page [33](#))

- Print the output report
- Copy part or all of the report
- Save the report to a file

## Exiting the report window

With the output report displayed on your screen:

- ☐ Select Close (Alt+C) at the bottom of the report window.

The data entry window is re-displayed. You can either

- Edit the data for the current record shown.
- or
- Select Patient > New (Ctrl+N) to begin data entry for a new record.

## Output report fields

The following table describes the fields on the output report.

**Table 11. Interactive output report fields**

Name	Description
Patient name Medical record number Admit date Discharge date Birth date Optional information Patient account number Age in years Sex Discharge status Primary payer Length of stay (LOS)	These output fields carry over the data entry information. <i>See the "Data entry fields" table (page <a href="#">18</a>) for information on these fields.</i>

Name	Description
<p>Grouping information (MDC, final DRG, final cost weight, grouper version used, HAC status)</p>	<p>The Major Diagnostic Category (MDC) and Final Diagnosis Related Group (DRG) assigned to the record based on the age, sex, discharge status, Hospital Acquired Conditions (HAC), Present on Admission (POA) indicators, and codes entered from the record. The MS-designated DRG cost weight shows under the DRG line. <i>For a list of DRGs and associated cost weights in the "Current MDCs and DRGs (page 73)".</i></p> <p>Patient records assigned to DRGs 998 (Principal diagnosis invalid as discharge diagnosis) or 999 (Ungroupable) will not have an assigned valid MDC. In these cases, "MDC: No MDC Assigned" is displayed.</p> <p>When DRG 999 is assigned, one of the following messages identifies the reason why the record is ungroupable:</p> <ul style="list-style-type: none"> <li>▪ Invalid principal diagnosis</li> <li>▪ Invalid age (&lt;0 or &gt;124)</li> <li>▪ Invalid discharge date</li> <li>▪ Invalid sex (not 1 or 2)</li> <li>▪ Invalid discharge status (batch only)</li> <li>▪ Record does not meet criteria for any DRG</li> <li>▪ Illogical principal diagnosis (not applicable for ICD-10)</li> <li>▪ Diagnosis code cannot be used as principal diagnosis</li> <li>▪ POA logic nonexempt - HAC-POA(s) invalid or missing or 1. *Long description: POA logic Indicator = Z AND at least one HAC POA is invalid or missing or 1 *Batch only</li> <li>▪ POA logic invalid/missing - HAC-POA(s) are N, U. *Long description: POA logic Indicator is invalid or missing AND at least one HAC POA is N or U *Batch only</li> <li>▪ POA logic invalid/missing - HAC-POA(s) invalid/missing or 1. *Long description: POA logic Indicator is invalid or missing AND at least one HAC POA is invalid or missing or 1 *Batch only</li> <li>▪ POA logic invalid/missing - multiple distinct HAC-POAs not Y,W. *Long description: POA Logic Indicator is invalid or missing AND there are multiple HACs that have different HAC POA values that are not Y or W *Batch only</li> </ul> <p>The version of the grouper used for grouping is displayed with the effective date associated with the grouper. If you default to the current grouper version when the discharge date is invalid or missing, the output states USED BY DEFAULT. See the "Data entry fields" table (page 19) for discharge date information.</p>

Name	Description
Clinical information	<p>Displayed codes include admit diagnosis, principal diagnosis, secondary diagnoses, and procedures. Descriptions follow the codes and, if applicable, the following indicators:</p> <p><b>DRG:</b> Indicates a secondary diagnosis or procedure used to determine DRG assignment. A secondary diagnosis code assigned with HAC and DRG indicates a DRG change with demotion. A procedure code assigned with HAC and DRG indicates code was used for the definition of HAC.</p> <p><b>HAC:</b> Indicates a code flagged as a Hospital Acquired Condition.</p> <p><b>MCC:</b> Indicates a diagnosis code considered to be a major complication or co-morbidity. An MCC diagnosis can significantly influence DRG assignment. When more than one MCC code is present, a DRG indicator replaces the MCC indicator to mark the MCC code used to determine DRG assignment.</p> <p><b>CC:</b> Indicates a diagnosis code considered to be a complication or co-morbidity. A CC diagnosis can significantly influence DRG assignment. When more than one CC code is present, a DRG indicator replaces the CC indicator to mark the CC code used to determine DRG assignment.</p> <p><b>OR:</b> Indicates a procedure code that normally requires use of an operating room and which can significantly influence DRG assignment. When more than one OR code is present, DRG replaces OR to mark the OR code used to assign the DRG.</p> <p><b>MCC excluded:</b> Indicates a diagnosis is a MCC but not considered due to PDX/SDX exclusion.</p> <p><b>CC excluded:</b> Indicates a diagnosis is a CC but not considered due to PDX/SDX exclusion.</p>
Present on Admission (POA) information	Indicates whether the diagnosis was present at the time the patient was admitted.
Edit information	Program edits that indicate a possible coding problem are displayed under the codes that generated them. Each edit includes a Medicare Code Editor notation (MCE). A maximum of four edits per code will be displayed. <i>See the "Program edits (page 35)" table for a description of each edit and why they occur.</i>
Initial DRG	Initial Diagnosis Related Group (DRG) assignment prior to Hospital Acquired Condition logic grouper processing.

Name	Description
Patient summary edits	<p>This section is where clinical edits and data entry error messages not pertaining to a specific code are displayed.</p> <p>Edits are flagged as pre-payment or post-payment errors, noted as one of the following:</p> <ul style="list-style-type: none"> <li>MCE pre-payment errors only</li> <li>MCE post-payment errors only</li> <li>MCE pre- and post-payment errors</li> <li>No MCE pre- or post-payment errors</li> </ul> <p>For this flag, edits are categorized as follows:</p> <p><u>Pre-payment</u></p> <ul style="list-style-type: none"> <li>Age conflict</li> <li>Duplicate of principal diagnosis</li> <li>E-code as principal diagnosis (ICD-9)</li> <li>V, W, X, or Y codes as principal diagnosis (ICD-10)</li> <li>Invalid ICD-9-CM code (ICD-9)</li> <li>Invalid ICD-10-CM code or Invalid ICD-10-PCS code (ICD-10)</li> <li>Manifestation code as principal diagnosis</li> <li>Non-covered procedure</li> <li>Questionable admission</li> <li>Questionable obstetric admission</li> <li>Sex conflict</li> <li>Unacceptable principal diagnosis/Requires secondary diagnosis</li> <li>Invalid age</li> <li>Invalid sex</li> <li>Invalid discharge status</li> <li>Limited coverage</li> <li>Wrong procedure performed</li> <li>Unspecified code</li> <li>Procedure inconsistent with LOS</li> </ul> <p><u>Post-payment</u></p> <ul style="list-style-type: none"> <li>Open biopsy check (discontinued 10/01/2010)</li> <li>Bilateral procedure (ICD-9)</li> <li>Non-specific diagnosis (discontinued 10/01/07)</li> <li>Non-specific O.R. procedure (discontinued 10/01/07)</li> <li>MSP Alert (discontinued 10/01/01)</li> </ul>

## Output report menu options

The following table describes the menu options on the output report window. Use the Function column to locate the task you want to perform. Accelerator keys allow you to bypass a menu and activate a function more quickly.

**Table 12. Output report menu items**

Function	Description	Accelerator key	Menu-based keystrokes
Print	Prints the output report	Ctrl+P	On File menu, (Alt + F), select Print (key = P)
Save As	Opens a Save As dialog box to save the currently displayed output report as a text file. Unless you specified otherwise, the filename will be report.txt and the file will be saved under My Documents folder. You can browse and save the file in any directory you choose. Records cannot be appended in the report.txt file. The file is overwritten each time you save a report unless you specify a different filename. The program asks if you want to overwrite the report.txt file before proceeding with the save.	Ctrl+S	On File menu (Alt + F), select Save As (key = A)
Exit	Closes the output report and re-displays the data entry window	Ctrl+Q	On File menu (Alt + F), select Exit (key = x)
Copy	Copies the selected text to the clipboard	Ctrl+C	On Edit menu (Alt + E), select Copy (key = C)
Select All	Selects the entire output report	Ctrl+A	On Edit menu (Alt + E), choose Select All (key = A)

## Output report command button

The following table describes the command button on the output report window. Refer to the Function column to locate the task you want to perform.

**Table 13. Output report command button**

Button	Function
Close (Alt+C)	Closes the output report and re-displays the data entry window.

## Program edits

The MCE edits in MSG/MCE software are described in this section. The following tables list the edits and where the edit is activated. Edits can appear on the interactive data entry window in the Codes section, and on program output under the codes that generated them.

**Table 14. Program edits - diagnosis codes**

Message	Description
Age conflict	Some diagnoses are unlikely for specific ages (e.g., a 5-year old with prostatic hypertrophy). Codes can be assigned to four age categories: Perinatal/Newborn - age of 0 years Pediatric - age 0–17 years inclusive Maternity - age 9–64 years inclusive Adult - age 15–124 years inclusive
Duplicate of principal diagnosis	When the same code is entered as the principal and a secondary diagnosis, this edit appears after the secondary diagnosis code. If the code happens to be on the CC list, the DRG assignment could be affected.
E-code as principal diagnosis	E-codes describe circumstances causing an injury and not the nature of the injury, and should not be used as a principal diagnosis (applicable in ICD-9).
Invalid ICD-9-CM code or Invalid ICD-10-CM code	The code is not in the list of valid codes and is assumed to be invalid or have a missing digit. A record with an invalid principal diagnosis code is assigned to DRG 999, Ungroupable.  <b>Note:</b> Diagnoses presented as all blank or all zeros are ignored (i.e. are not marked as invalid) except for the principal diagnosis.
Manifestation code as principal diagnosis	A manifestation code describes an underlying disease, not the disease itself, and should not be used as a principal diagnosis.

Message	Description
Secondary payer alert (MSP alert)	<p>Certain trauma-related codes may indicate that another type of liability insurance should be the primary payer rather than Medicare.</p> <p><b>Note:</b> This edit was discontinued on 10/01/2001 and will be displayed in MSG/MCE software versions 16.0–18.0 only.</p>
Non-specific principal diagnosis	<p>Some codes, especially "not otherwise specified" (NOS) codes, are valid but are not suitably specific for a principal diagnosis. This edit applies only if the patient is discharged alive since a more complete diagnostic work-up might not have been possible for a patient who has died.</p> <p><b>Note:</b> This edit was discontinued on 10/01/2007 and will be displayed in MSG/MCE software versions 16.0–24.0 only.</p>
Questionable admission	Some diagnoses are not usually considered sufficient justification for admission to an acute care facility (e.g., benign hypertension).
Sex conflict	Some codes are specific to gender. The edit indicates when such a code indicates a diagnosis (e.g., maternity) inconsistent with the gender of the patient (male).
Unacceptable principal diagnosis	Selected codes describe a circumstance that influences an individual's health status but is not the current injury or illness. These codes should not be used as a principal diagnosis.
Requires secondary diagnosis	However, some codes otherwise considered as unacceptable are accepted if any secondary diagnosis is present. If no secondary diagnosis is present for these codes, the Requires secondary diagnosis message will appear.
Unspecified code	Unspecified codes exist in the ICD-10-CM classification for circumstances when documentation in the medical record does not provide the level of detail needed to support reporting a more specific code. However, in the inpatient setting, there should generally be very limited and rare circumstances for which the laterality (right, left, bilateral) of a condition is unable to be documented and reported.
V, W, X or Y code as principal diagnosis	V, W, X or Y codes describe circumstances causing an injury and not the nature of the injury, and should not be used as a principal diagnosis (applicable in ICD-10).
Wrong procedure performed	Certain E-codes indicate that the wrong procedure was performed. This edit indicates that one of these E-codes is present.

**Table 15. Program edits - procedure codes**

Message	Description
Bilateral procedure	Codes may not accurately reflect procedures performed on two or more different bilateral joints of the lower extremities during the same admission. The software indicates that the coded bilateral procedure may actually have been two procedures done on a single joint (e.g., a total hip replacement with a partial hip replacement will generate the edit while two total hip replacements will not). (ICD-9 only)
Invalid ICD-9-CM code or Invalid ICD-10-PCS code	<p>The code is not in the list of valid codes and is assumed to be invalid or have a missing digit.</p> <p><b>Note:</b> Procedures presented as all blank or all zeros are ignored (i.e. are not marked as invalid).</p>
Limited coverage	<p>For certain procedures whose medical complexity and serious nature incur extraordinary associated costs, Medicare limits coverage to a portion of the cost. The limited coverage edit is generated on claims containing any of the procedures listed below.</p> <ul style="list-style-type: none"> <li>Lung volume reduction surgery (LVRS) (ICD-9 only)</li> <li>Lung transplant</li> <li>Combination heart/lung transplant (ICD-9 only)</li> <li>Heart transplant</li> <li>Implantable heart assist system</li> <li>Intest/multi-visceral transplant</li> <li>Liver transplant</li> <li>Kidney transplant</li> <li>Pancreas transplant</li> <li>Artificial heart transplant</li> </ul> <p><b>Note:</b> The edit message indicates the type of limited coverage, for ICD-9 only (e.g., Heart transplant-Limited coverage, Lung transplant-Limited coverage, etc.). For ICD-10, the edit message will simply say "Limited coverage."</p>
Non-covered procedure	Some procedures are not covered by Medicare payment.
Non-specific O.R. procedure	<p>Some codes, especially NOS (not otherwise specified) codes, are valid but are not suitably specific. This edit applies only if all coded O.R. procedures are considered non-specific.</p> <p><b>Note:</b> This edit was discontinued on 10/01/2007 and will be displayed in MSG/MCE software versions 16.0–24.0 only.</p>

Message	Description
Open biopsy check (If not open biopsy, code XXXX)	<p>Surgical biopsies are called open biopsies and are relatively infrequent. A different DRG is assigned depending on whether or not the biopsy was open. There are specific ICD-9-CM codes for open and non-open biopsies. The software identifies all open biopsy codes, suggesting an alternate code (XXXX) if the procedure was a closed biopsy.</p> <p><b>Note:</b> This edit was discontinued on 10/01/2010 and will be displayed in MSG/MCE software versions 16.0–27.0 only.</p>
Sex conflict	Some codes are specific to gender. The edit indicates when a procedure code (e.g., prostatectomy) is inconsistent with the gender of the patient (female).
Procedure inconsistent with LOS	The code should only be coded on claims greater than four days.
Questionable obstetric admission	ICD-10-PCS procedure codes describing a cesarean section or vaginal delivery are considered to be a questionable admission except when reported with a corresponding secondary diagnosis code describing the outcome of delivery.

**Table 16. Program edits - invalid**

Message	Description
Invalid age <sup>a</sup>	A patient's age is usually necessary for appropriate DRG determination. If the age is not between 0 and 124 years, the age is assumed to be in error.
Invalid sex <sup>a</sup>	A patient's sex is sometimes necessary for appropriate DRG determination. The sex code reported must be either 1 (male) or 2 (female).
Invalid discharge status <sup>a</sup>	A patient's discharge status is sometimes necessary for appropriate DRG determination. Discharge status must be coded according to the UB-04 conventions. For a list of valid entries, see the "Data entry fields" table (page <a href="#">19</a> ).

a. All three invalid edits will be shown as a DRG return code in the batch .up (upload) file.

# Chapter 4: Batch processing

The Medicare Severity Grouper with Medicare Code Editor (MSG/MCE) software processes medical record data by two methods:

- Interactively entering one record at a time;
- By batch, processing data from a group of records entered in an MS-DOS file.

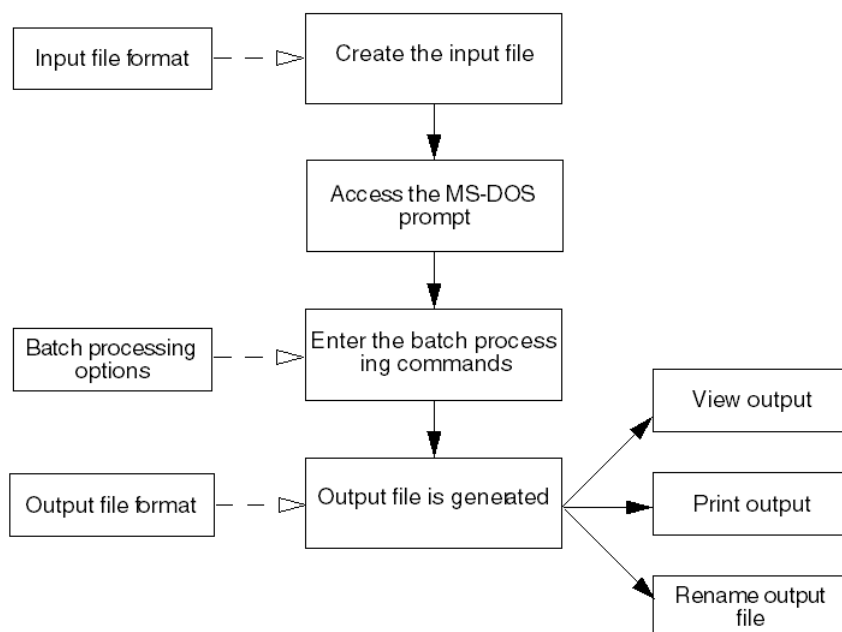
This chapter discusses the batch method of claim processing. Batch processing enables you to process many records at a time by entering data into an input file, and then running that file through the grouper. This method uses an MS-DOS environment to run an input file and to produce a file of formatted output reports and/or an upload file.

Sections in this chapter give you information on:

- Steps to run batch processing
- Input and output file formats
- Processing options
- How to work with batch output
- Error messages
- Log files

## Steps in batch processing

The following figure is a flow chart that shows the steps in processing records in batch using the MSG/MCE software.



*Figure 3: Batch processing overview*

Follow these procedural steps to perform batch processing

1. Create the input file.

*See "Input file format" (page [41](#)) for detailed information on formatting the input field information.*

2. From the Start menu, select All Programs > MSG MCE SOFTWARE I10 > MS-DOS prompt.  
A window with the MS-DOS prompt is displayed.

**Note:** If you see a message similar to the one below, click Yes to proceed to the MS-DOS prompt with Windows administrator status.

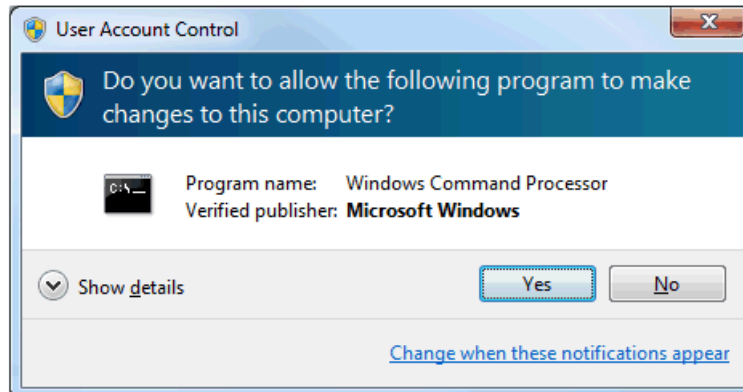


Figure 4: User Account Control permission prompt

3. At the prompt in the DOS window, type the batch processing command line specifying the input file containing your claim information, the output that you want, then press Enter.

The command line must contain:

- The executable command mce
- An input filename preceded by the -i identifier
- An output filename preceded by the -o identifier and/or an upload filename preceded by the -u identifier

See "Command line processing options" (page [47](#)) for information on processing options and command lines, including examples.

4. If an error message is displayed on the screen and the program ends, resolve the problem and run the process again.

See "Batch processing error messages" (page [63](#)) for information on error messages that can occur, with their descriptions.

5. View and/or print the output file.

See "Working with batch output" (page [62](#)) for more information, if necessary.

## Input file format

The batch input file is a single-line, fixed format consisting of sequential 835 character input records. The following table defines the record layout for this format.

**Table 17. Input file record layout**

Field name	Position	Length	Occurrences	Description
Patient name	1	31	1	Patient name. Alphanumeric. Left-justified, blank-filled. All blanks if no value is entered.
Medical record number	32	13	1	Medical record number. Alphanumeric. Left-justified, blank-filled. All blanks if no value is entered.
Account number	45	17	1	Account number. Alphanumeric. Left-justified, blank-filled. All blanks if no value is entered.
Admit date	62	10	1	Admit date. mm/dd/yyyy format. All blanks if no value is entered. Used in age and LOS calculations.
Discharge date	72	10	1	Discharge date. mm/dd/yyyy format. All blanks if no value is entered. Used in LOS calculation.
Discharge status	82	2	1	UB-04 discharge status. Right-justified, zero-filled. Valid values: 01 = Home or self-care 02 = Disch/trans to another short term hosp 03 = Disch/trans to SNF 04 = Disch/trans to ICF (valid until 09/30/09) 04 = Custodial/supportive care (revised 10/01/09) 05 = Disch/trans to another type of facility (valid until 03/31/08) 05 = Canc/child hosp (revised 04/01/08)

Field name	Position	Length	Occurrences	Description
				06 = Care of home health service 07 = Left against medical advice 08 = Home IV service (valid until 09/30/05) 20 = Died 21 = Disch/trans to court/law enforcement (added 10/01/09) 30 = Still a patient 43 = Fed hospital (added 10/01/03) 50 = Hospice-home 51 = Hospice-medical facility 61 = Swing Bed (added 10/01/2001) 62 = Rehab fac/unit (added 10/01/2001) 63 = LTC hospital (added 10/01/2001) 64 = Nursing facility–Medicaid certified (added 10/01/02) 65 = Psych hosp/unit (added 10/01/03) 66 = Critical access hospital (added 10/01/05) 69 = Designated Disaster Alternative Care Site 70 = Oth institution (added 04/01/08) 71 = OP services-other facility (10/01/01–09/30/03 only) 72 = OP services-this facility (10/01/01–09/30/03 only) 81 = Home-Self care w Planned Readmission 82 = Short Term Hospital w Planned Readmission 83 = SNF w Planned Readmission 84 = Cust/supp care w Planned Readmission 85 = Canc/child hosp w Planned Readmission 86 = Home Health Service w Planned Readmission 87 = Court/law enfrc w Planned Readmission

Field name	Position	Length	Occurrences	Description
				88 = Federal Hospital w Planned Readmission 89 = Swing Bed w Planned Readmission 90 = Rehab Facility/ Unit w Planned Readmission 91 = LTCH w Planned Readmission 92 = Nursg Fac-Medicaid Cert w Planned Readmiss 93 = Psych Hosp/Unit w Planned Readmission 94 = Crit Acc Hosp w Planned Readmission 95 = Oth Institution w Planned Readmission
Primary payer	84	2	1	Primary pay source. Right-justified, zero-filled. Valid values: 01 = Medicare 02 = Medicaid 03 = Title V 04 = Other Govt 05 = Work Comp 06 = Blue Cross 07 = Insur Co 08 = Self Pay 09 = Other 10 = No Charge
LOS	86	5	1	Length of stay. Right-justified, zero-filled. All blanks if no value is entered. Calculated LOS overrides entered LOS. Valid values=00000 through 45291
Birth date	91	10	1	Birth date. mm/dd/yyyy format. All blanks if no value is entered. Used in age calculation.
Age	101	3	1	Age. Right-justified, zero-filled. All blanks if no value is entered. Valid values: 0–124 years. Calculated age (admit date minus birth date) takes precedence over entered age.

Field name	Position	Length	Occurrences	Description
Sex	104	1	1	Sex. Numeric. Valid values: 0 = Unknown 1 = Male 2 = Female
Admit diagnosis	105	7	1	Admit diagnosis. Left-justified, blank-filled. Diagnosis code without decimal. All blanks if no value is entered.  <b>Note:</b> Only diagnosis codes of up to five digits are currently recognized as valid for ICD-9 and seven digits for ICD-10. When a code shorter than seven digits is entered, it will be blank filled through the seventh position.
Principal diagnosis	112	8	1	Principal diagnosis. First 7 bytes left-justified, blank-filled without decimals. Eighth byte represents POA indicator. Valid values: Y = Yes, present at the time of inpatient admission N = No, not present at the time of inpatient admission W = Clinically unable to determine if present at the time of admission U = Insufficient documentation to determine if present at the time of admission 1 = Exempt from POA reporting Blank = Exempt from POA reporting  <b>Note:</b> Only diagnosis codes of up to five digits are currently recognized as valid for ICD-9 and seven digits for ICD-10. When a code shorter than seven digits is entered, it will be blank-filled through the seventh position.

Field name	Position	Length	Occurrences	Description
Secondary diagnoses	120	8	24	<p>Diagnoses. First 7 bytes left-justified, blank-filled. Eighth byte represents POA indicator. Up to 24 diagnosis codes without decimals. Valid values:</p> <p>Y = Yes, present at the time of inpatient admission</p> <p>N = No, not present at the time of inpatient admission</p> <p>W = Clinically unable to determine if present at the time of admission</p> <p>U = Insufficient documentation to determine if present at the time of admission</p> <p>1 = Exempt from POA reporting</p> <p>Blank = Exempt from POA reporting</p> <p><b>Note:</b> Only diagnosis codes of up to five digits are currently recognized as valid for ICD-9 and seven digits for ICD-10. When a code shorter than seven digits is entered, it will be blank-filled through the seventh position.</p>
Principal Procedure	312	7	1	<p>Procedure codes. Seven left-justified characters, blank-filled.</p> <p><b>Note:</b> Only procedure codes of up to four digits are currently recognized as valid for ICD-9 and seven digits for ICD-10. When a code shorter than seven digits is entered, it will be blank filled through the seventh position.</p>
Secondary Procedures	319	7	24	<p>Procedure codes. Seven left-justified characters, blank-filled. Up to 24 procedure codes without decimal.</p> <p><b>Note:</b> Only procedure codes of up to four digits are currently recognized as valid for ICD-9 and seven digits for ICD-10. When a code shorter than seven digits is entered, it will be blank filled through the seventh position.</p>

Field name	Position	Length	Occurrences	Description
Procedure date	487	10	25	<b>For future use.</b> Procedure dates. The format is mm/dd/yyyy (for future use with POA logic.) All blanks if no value is entered. Up to 25 procedure dates accepted.
Apply HAC logic	737	1	1	Values X or Z to be captured for use with HAC logic. These values reflect whether a hospital requires POA reporting. X = Exempt from POA indicator reporting Z = Requires POA indicator reporting  <b>Note:</b> If value not X or Z an error code may result.
UNUSED	738	1	1	UNUSED
Optional information	739	72	1	Optional field. Left-justified, blank-filled. All blanks if no value is entered.
Filler	811	25	1	Not used. Blank-filled.

## Command line processing options

When processing a batch file, you must include specific options on the command line to tell the program what file to process and what type of output you want. The following table lists the available batch processing options with their descriptions. Examples of command lines follow the table.

When dealing with filenames and/or directories that include spaces, you should quote the entire path including drive specifications, as follows:

```
"C:/Program Files/MsgMce/Production/input file 1.txt"
```

**Note:** When quoting directory paths that contain backslashes '\', the backslashes need to be doubled as follows:

```
"C:\\Program Files\\MsgMce\\Production\\input file 1.txt"
```

The same rule applies to relative paths. For example, up two directories to Production would be written as follows:

```
"..\..\..\Production\\"
```

**Table 18. Batch processing options**

Option	Description
-i	Use with the input filename. Required for all batch runs. The name cannot be the same as the output filename.
-o	Use with the output filename to create a formatted output report. You must enter a filename. The name cannot be the same as the upload filename. If a file already exists with the same name as the one you specify with the -o option, the existing file will be overwritten. The -o option is not required when the -u option is used.
-u	Specifies a single-line upload file without code descriptions. You must enter a filename. The name cannot be the same as the output filename. If a file already exists with the same name as the one you specify with the -u option, the existing file will be overwritten. The -u option is required when there is no -o option.

## Command line examples

Examples of batch processing commands are given below.

### Example 1

```
msgmce -i <input filename> -o <output filename>
```

### Result

Runs the specified input file and creates a formatted output report file.

### Example 2

```
msgmce -i <input filename> -u <upload filename>
```

## Result

Runs the specified input file and creates a single-line upload file.

### Example 3

```
msgmce -i <input filename> -o <output filename> -u <upload filename>
```

## Result

Runs the specified input file and creates both a formatted output report file and a single-line upload file.

## Output file formats

The output from a batch run is determined by the option(s) you entered on the command line. The following table describes the options.

**Table 19. Batch processing output**

Option	Output created
-o	An output file of formatted reports
-u	An upload file of records without code descriptions

### Formatted output (-o option)

The file of formatted output reports generated with the -o option is saved where the product was installed. Unless you specified otherwise, this directory is: C:\Program Files\MSG MCE SOFTWARE I10. See the "Program output" section (page [27](#)) for an example of an output report. Note that optional information is displayed in the Optional information field on the output report.

If you name the output file the same for every batch run, the file will be overwritten during each run. To save an output file, rename it after a batch run or specify a different name on the command line. "Renaming a file" (page [63](#)) contains instructions, if you need them.

### Upload file (-u option)

The file of records generated with the -u option is saved where the product was installed. Unless you specified otherwise, this directory is: C:\Program Files\MSG MCE SOFTWARE I10.

If you name the upload file the same for every batch run, the file will be overwritten during each run. To save an upload file, rename it after a batch run or specify a different name on the command line. "Renaming a file" (page [63](#)) contains instructions, if you need them.

The upload file consists of fixed-format, sequential 1905 character output records. The following table defines the upload file record layout.

**Note:** In previous versions of the software some unused fields had zeros as placeholders. Starting with v26.0, please refer to the manual for field information, as a zero may have a different meaning.

**Table 20. Upload file record layout**

Field name	Position	Length	Occurrences	Description
n/a	001	835	1	Input record
MSG/MCE version used	836	3	1	Version of the software used to process the claim. Right-justified, blank-filled. Stored without decimal point.  Valid values: 420, 411, 410, 401, 400, 391, 390, 381, 380, 372, 371, 370, 360, 350, 340, 330, 320, 310, 300, 290, 280, 270, 260, 251, 250, 240, 230, 220, 210, 200, 190, 180, 170, 160.
Initial DRG	839	3	1	Initial diagnosis related group. Right-justified, zero-filled.
Initial M/S indicator	842	1	1	Initial medical/surgical indicator. 0 = DRG return code was not zero 1 = Medical DRG 2 = Surgical DRG
Final MDC	843	2	1	Major diagnostic category. Right-justified, zero-filled.
Final DRG	845	3	1	Final diagnosis related group. Right-justified, zero-filled.
Final M/S indicator	848	1	1	Final medical/surgical indicator. 0 = DRG return code was not zero 1 = Medical DRG 2 = Surgical DRG

Field name	Position	Length	Occurrences	Description
DRG return code	849	2	1	<p>Numeric. Right-justified, zero-filled. Valid values:</p> <p>0 = OK, DRG assigned</p> <p>1 = Diagnosis code cannot be used as PDX</p> <p>2 = Record does not meet criteria for any DRG</p> <p>3 = Invalid age</p> <p>4 = Invalid sex</p> <p>5 = Invalid discharge status</p> <p>10 = Illogical PDX (not applicable for ICD-10)</p> <p>11 = Invalid PDX</p> <p>12 = POA logic nonexempt - HAC-POA(s) invalid, missing, or 1 (batch only)</p> <p>13 = POA logic invalid/missing - HAC-POA(s) are N, U (batch only)</p> <p>14 = POA logic invalid/missing - HAC-POA(s) invalid/missing or 1 (batch only)</p> <p>18 = POA logic invld/mssng - multiple distinct HAC-POAs not Y,W (batch only)</p> <p>Note: If return code 50- 54, 57 is returned, output blank value.</p>
MSG/MCE edit return code	851	4	1	<p>Four-character return code, right-justified, zero-filled. Valid values:</p> <p>0000 = MCE - No errors found</p> <p>0001 = MCE - Pre-payment error</p> <p>0002 = MCE - Post-payment error</p> <p>0003 = MCE - Pre- and post-payment errors</p> <p>0004 = MCE - Invalid discharge date (grouper defaults to current grouper if date out of range for versions in product)</p> <p><i>See the "Output report fields (page 30)" table for information on which edits are classified as pre- and post-payment errors.</i></p>
Diagnosis code count	855	2	1	<p>Number of diagnosis codes processed. Right-justified, zero-filled. This field does not include the admit diagnosis.</p>
Procedure code count	857	2	1	<p>Number of procedure codes processed. Right-justified, zero-filled.</p>

Field name	Position	Length	Occurrences	Description
Principal diagnosis edit return flag	859	8	1	<p>Two-byte flag. Right-justified, zero-filled. A maximum of four flags can be returned for each diagnosis code. Valid values:</p> <p>00 = Diagnosis not used to assign DRG</p> <p>01 = Invalid diagnosis code</p> <p>02 = Sex conflict</p> <p>03 = Not applicable for principal diagnosis</p> <p>04 = Age conflict</p> <p>05 = V, W, X, or Y code as principal diagnosis (ICD-10)</p> <p>E-code as principal diagnosis (ICD-9)</p> <p>06 = Non-specific principal diagnosis (MCE versions 15.0–23.0 only)</p> <p>07 = Manifestation code as principal diagnosis</p> <p>08 = Questionable admission</p> <p>09 = Unacceptable principal diagnosis</p> <p>10 = Secondary diagnosis required</p> <p>11 = Principal diagnosis is its own CC</p> <p>12 = Diagnosis affected both initial and final DRG assignment</p> <p>13 = MSP alert (MCE versions 15.0–17.0 only)</p> <p>14 = Principal diagnosis is its own MCC</p> <p>15 = Diagnosis affected the final DRG only</p>

Field name	Position	Length	Occurrences	Description
				16 = Diagnosis affected the initial DRG only 17 = Diagnosis is a MCC for initial DRG and a Non-CC for final DRG 18 = Diagnosis is a CC for initial DRG and a Non-CC for final DRG 19 = Wrong Procedure Performed 20 = Unspecified code 21 = Diagnosis is a CC but not considered due to PDX/SDX exclusion 23 = Diagnosis is a MCC but not considered due to PDX/SDX exclusion 24 = Diagnosis was a CC but not considered due to DRG Logic exclusion 25 = Diagnosis was a MCC but not considered due to DRG Logic exclusion 99 = Principal diagnosis part of HAC assignment criteria
Principal diagnosis Hospital Acquired Condition assignment criteria #1	867	2	1	Hospital Acquired Condition (HAC) assignment criteria #1 00 = Criteria to be assigned as a HAC not met 11 = Infection after bariatric surgery Blank = Diagnosis was not considered by grouper
Principal diagnosis Hospital Acquired Condition assignment criteria #2	869	2	1	Hospital Acquired Condition (HAC) assignment criteria #2 00 = Criteria to be assigned as a HAC not met 11 = Infection after bariatric surgery Blank = Diagnosis was not considered by grouper
Principal diagnosis Hospital Acquired Condition assignment criteria #3	871	2	1	Hospital Acquired Condition (HAC) assignment criteria #3 00 = Criteria to be assigned as a HAC not met 11 = Infection after bariatric surgery Blank = Diagnosis was not considered by grouper

Field name	Position	Length	Occurrences	Description
Principal diagnosis Hospital Acquired Condition assignment criteria #4	873	2	1	Hospital Acquired Condition (HAC) assignment criteria #4  00= Criteria to be assigned as a HAC not met  11 = Infection after bariatric surgery  Blank = Diagnosis was not considered by grouper
Principal diagnosis Hospital Acquired Condition assignment criteria #5	875	2	1	Hospital Acquired Condition (HAC) assignment criteria #5  00 = Criteria to be assigned as a HAC not met  11 = Infection after bariatric surgery  Blank = Diagnosis was not considered by grouper
Principal diagnosis Hospital Acquired Condition usage #1	877	1	1	Hospital Acquired Condition (HAC) usage #1  0 = HAC not applicable  1 = HAC criteria met  2 = HAC criteria not met  3 = Dx on HAC list, but HAC not applicable due to PDX/SDX exclusion  4 = HAC not applicable, hospital is exempt from POA reporting  Blank = Diagnosis was not considered by grouper
Principal diagnosis Hospital Acquired Condition usage #2	878	1	1	Hospital Acquired Condition (HAC) usage #2  0 = HAC not applicable  1 = HAC criteria met  2 = HAC criteria not met  3 = Dx on HAC list, but HAC not applicable due to PDX/SDX exclusion  4 = HAC not applicable, hospital is exempt from POA reporting  Blank = Diagnosis was not considered by grouper

Field name	Position	Length	Occurrences	Description
Principal diagnosis Hospital Acquired Condition usage #3	879	1	1	Hospital Acquired Condition (HAC) usage #3 0 = HAC not applicable 1 = HAC criteria met 2 = HAC criteria not met 3 = Dx on HAC list, but HAC not applicable due to PDX/SDX exclusion 4 = HAC not applicable, hospital is exempt from POA reporting Blank = Diagnosis was not considered by grouper
Principal diagnosis Hospital Acquired Condition usage #4	880	1	1	Hospital Acquired Condition (HAC) usage #4 0 = HAC not applicable 1 = HAC criteria met 2 = HAC criteria not met 3 = Dx on HAC list, but HAC not applicable due to PDX/SDX exclusion 4 = HAC not applicable, hospital is exempt from POA reporting Blank = Diagnosis was not considered by grouper
Principal diagnosis Hospital Acquired Condition usage #5	881	1	1	Hospital Acquired Condition (HAC) usage #5 0 = HAC not applicable 1 = HAC criteria met 2 = HAC criteria not met 3 = Dx on HAC list, but HAC not applicable due to PDX/SDX exclusion 4 = HAC not applicable, hospital is exempt from POA reporting Blank = Diagnosis was not considered by grouper

Field name	Position	Length	Occurrences	Description
Secondary diagnosis return flag	882	8	24	<p>Two-byte flag. Right-justified, zero-filled. A maximum of four flags can be returned for each diagnosis code. These 2-byte flags are a combination of information concerning every diagnosis from the DRG assignment and the editor.</p> <p><b>Note:</b> A maximum of four flags can be returned per diagnosis code. Always display the edit number before the zeros.</p> <p>Valid values:</p> <p>00 = Diagnosis not used to assign DRG</p> <p>01 = Invalid diagnosis code</p> <p>02 = Sex conflict</p> <p>03 = Duplicate of principal diagnosis</p> <p>04 = Age conflict</p> <p>05-10 = Not applicable for secondary diagnoses</p> <p>11 = Secondary diagnosis is a CC</p> <p>12 = Diagnosis affected both initial and final DRG assignment</p> <p>13 = MSP alert (MCE versions 15.0-17.0 only)</p> <p>14 = Secondary diagnosis is an MCC</p> <p>15 = Diagnosis affected the final DRG only</p> <p>16 = Diagnosis affected the initial DRG only</p> <p>17 = Diagnosis is a MCC for initial DRG and a Non-CC for final DRG</p> <p>18 = Diagnosis is a CC for initial DRG and a Non-CC for final DRG</p> <p>19 = Wrong procedure performed</p> <p>20 = Unspecified code</p> <p>21 = Diagnosis is a CC but not considered due to PDX/SDX exclusion</p> <p>23 = Diagnosis is a MCC but not considered due to PDX/SDX exclusion</p> <p>24 = Diagnosis was a CC but not considered due to DRG Logic exclusion</p> <p>25 = Diagnosis was a MCC but not considered due to DRG Logic exclusion</p> <p>99 = Secondary diagnosis is a HAC</p>

Field name	Position	Length	Occurrences	Description
Secondary diagnosis Hospital Acquired Condition assignment criteria #1 through 5	1074	10	24	<p>Hospital Acquired Condition (HAC) assigned #1-5. These 2-byte flags are a combination of information concerning every diagnosis from the DRG assignment and the editor.</p> <p><b>Note:</b> A maximum of five flags can be returned per diagnosis code. Always display the edit number before the zeros.</p> <p>00 = Criteria to be assigned as a HAC not met</p> <p>01 = Foreign object retained after surgery</p> <p>02 = Air embolism</p> <p>03 = Blood incompatibility</p> <p>04 = Pressure ulcers</p> <p>05 = Falls and trauma</p> <p>06 = Catheter associated UTI</p> <p>07 = Vascular catheter-associated infection</p> <p>08 = Infection after CABG</p> <p>09 = Manifestations of poor glycemic control</p> <p>10 = DVT/PE after knee or hip replacement</p> <p>11 = Infection after bariatric surgery</p> <p>12 = Infection after certain orthopedic procedures of spine, shoulder, and elbow</p> <p>13 = Surgical site infection (SSI) following cardiac implantable electronic device (CIED) procedures</p> <p>14 = Iatrogenic Pneumothorax w/ Venous Catheterization</p> <p>Blank = Diagnosis was not considered by grouper</p>

Field name	Position	Length	Occurrences	Description
Secondary diagnosis Hospital Acquired Condition usage #1 through 5	1314	5	24	<p>Hospital Acquired Condition (HAC) usage #1-5. This 1-byte flag is a combination of information concerning every diagnosis from the DRG assignment and the editor.</p> <p><b>Note:</b> A maximum of five flags can be returned per diagnosis code. Always display the edit number before the zeros.</p> <p>0 = HAC not applicable  1 = HAC criteria met  2 = HAC criteria not met  3 = Dx on HAC list, but HAC not applicable due to PDX/SDX exclusion  4 = HAC not applicable, hospital is exempt from POA reporting  Blank = Diagnosis was not considered by grouper</p>
Procedure edit return flag*	1434	8	25	<p>Two-byte flag. Right-justified, zero-filled. A maximum of four flags can be returned for each procedure code.</p> <p>These 2-byte flags are a combination of information concerning every procedure from the DRG assignment and the editor.</p> <p><b>Note:</b> A maximum of four flags can be returned per procedure code. Always display the edit number before the zeros.</p> <p>Valid values:  00 = Procedure did not affect DRG assignment  01 = Invalid procedure code  02 = Sex conflict  12* = Procedure affected both initial and final DRG assignment</p>

Field name	Position	Length	Occurrences	Description
				<p>15* = Procedure affected the final DRG assignment only</p> <p>16* = Procedure affected the initial DRG assignment only</p> <p>20 = Procedure is an OR procedure</p> <p>21 = Non-specific OR procedure (MCE versions 15.0 - 23.0 only)</p> <p>22 = Open biopsy check (MCE versions 2.0 - 27.0 only)</p> <p>23 = Non-covered procedure</p> <p>24 = Bilateral procedure (ICD-9 only)</p> <p>30 = Limited coverage (ICD-10 only)</p> <p>30 = Lung volume reduction surgery (LVRS) - limited coverage (ICD-9 only)</p> <p>31 = Questionable Obstetric Admission (ICD-10 only)</p> <p>31 = Lung transplant - limited coverage (ICD-9 only)</p> <p>32 = Combo heart/lung transplant - limited coverage (ICD-9 only)</p> <p>33 = Heart transplant - limited coverage (ICD-9 only)</p> <p>34 = Implantable hrt assist - limited coverage (ICD-9 only)</p> <p>35 = Intest/multi-visceral transplant - limited coverage (ICD-9 only)</p>

Field name	Position	Length	Occurrences	Description
				<p>36 = Liver transplant - limited coverage (ICD-9 only)</p> <p>37 = Kidney transplant - limited coverage (ICD-9 only)</p> <p>38 = Pancreas transplant - limited coverage (ICD-9 only)</p> <p>39 = Artificial Heart Transplant-Limit Coverage (ICD-9 only)</p> <p>40 = Procedure inconsistent with LOS</p> <p>99 = Procedure part of HAC assignment criteria</p> <p>* When there are two or more procedures on the record that could impact either the initial, final or both DRG assignments:</p> <ul style="list-style-type: none"> <li>▪ If one of these procedures is in the first procedure position, that procedure will be flagged as 12,15 or 16 as appropriate in the "Procedure edit return" field with the following exceptions: <ul style="list-style-type: none"> <li>a. If a single procedure designating a complete system is tied with a combination pair that also designated a complete system, the single procedure will be flagged regardless of position.</li> <li>b. If multiple combinations of lead/device pairs are tied then only one pair will be flagged regardless of position.</li> <li>c. If the two procedures tied are an OR and non-OR, the OR will be flagged regardless of position.</li> </ul> </li> <li>▪ If none of the tied procedures is in the first procedure position, then the procedure with the lowest ascii/index value will be flagged.</li> </ul>

Field name	Position	Length	Occurrences	Description
Procedure Hospital Acquired Condition assignment criteria # 1 through 5	1634	10	25	<p>Hospital Acquired Condition (HAC) assignment criteria #1-5. These 2-byte flags are a combination of information concerning every procedure from the DRG assignment and the editor.</p> <p><b>Note:</b> A maximum of five flags can be returned per procedure code. Always display the edit number before the zeros.</p> <p>00 = Criteria to be assigned as a HAC not met</p> <p>08 = Infection after CABG</p> <p>10 = DVT/PE after knee or hip replacement</p> <p>11 = Infection after bariatric surgery</p> <p>12 = Infection after certain orthopedic procedures of spine, shoulder, and elbow</p> <p>13 = Surgical site infection (SSI) following cardiac implantable electronic device (CIED) procedures</p> <p>14 = Iatrogenic Pneumothorax w/ Venous Catheterization</p> <p>Blank = Procedure not considered by grouper</p>
Initial 4-digit DRG	1884	4	1	Initial 4-digit DRG. Right-justified, zero-filled.
Final 4-digit DRG	1888	4	1	Final 4-digit DRG. Right-justified, zero-filled.
Final DRG CC/MCC usage	1892	1	1	<p>0 = DRG assigned is not based on the presence of CC or MCC</p> <p>1 = DRG assigned is based on presence of MCC</p> <p>2 = DRG assigned is based on presence of CC.</p>
Initial DRG CC/MCC Usage	1893	1	1	<p>0 = DRG assigned is not based on the presence of a CC or MCC</p> <p>1 = DRG assigned is based on presence of MCC</p> <p>2 = DRG assigned is based on presence of CC</p>

Field name	Position	Length	Occurrences	Description
Number of Unique Hospital Acquired Conditions Met	1894	2	1	The number of Unique Hospital Acquired Conditions that have been met.
Hospital Acquired Condition Status	1896	1	1	HAC Status 0 – HAC Status: Not Applicable 1 – HAC Status: One or more HAC criteria met; Final DRG does not change 2 – HAC Status: One or more HAC criteria met; Final DRG changes 3 – HAC Status: One or more HAC criteria met; Final DRG changes to ungroupable
Cost Weight	1897	7	1	The DRG cost weight. This 7-byte field is displayed as 2 digits, followed by a decimal point, followed by 4 digits.
newline	1904	2	1	End of record (carriage return/line feed). Not included on last record.

## Working with batch output

Output from batch processing can be viewed on your computer screen or printed as hard copy. This section also tells you how to rename a file so you can use the same output filename in the command line and not overwrite the records from a preceding run when you process a new batch of input data.

### Viewing output

To view the formatted reports in the output file (using the -o option on the command line):

- ☐ At the system prompt in the directory where the file was created, enter:

```
type <filename> | more
```

This command displays the contents of the file, one screen at a time. Press the space bar to advance through the file.

## Printing output

To print the contents of the output file:

- ❑ At the system prompt in the directory where the file was created, enter:

```
print <filename>
```

## Renaming a file

**To rename an output file**

- ❑ At the system prompt in the directory where the file was created, enter:

```
rename <old filename> <new filename>
```

## Batch processing error messages

The following table is list of the error messages that can occur during batch processing, and their outcomes.

**Note:** When a potential for two processing option errors occurs, the process option coupling takes precedence over the process option duplication. Since (-i, -o, and -u) require a filename parameter, the parameter is checked prior to a duplicate process option.

Example: msgmce -i -i inputfile -o outputfile [Error: Invalid option or its value: -i is missing or has an invalid option.]

Example: msgmce -i inputfile -i anotherinput -o outputfile [Error: The processing option (-i) should only be entered once.]

**Table 21. Batch processing error messages**

Message	Why it's generated	What happens
Admit date cannot be after discharge date	The program checks for logical sequencing of dates.	The input record is processed and an error message is written in the log file.
Admit date cannot precede 01/01/1900	Occurs when the admit date precedes 01/01/1900	A valid date is on or after 01/01/1900
Admit date cannot precede Birth date	The program checks for logical sequencing of dates.	The input record is processed and an error message is written in the log file.

Message	Why it's generated	What happens
Admit date is invalid	Any of the month, day, and year entries are not in the valid ranges.	The input record is processed and an error message is written in the log file.
An input file (-i) must be specified	The required -i option is missing.	The message is displayed on the screen and the program ends.
An output file (-o) or upload file (-u) must be specified	At least one of the -o and -u options must be specified.	The message is displayed on the screen and the program ends.
Birth date cannot be after admit date	The program checks for logical sequencing of dates.	The input record is processed and an error message is written in the log file.
Birth date cannot be after current date	The program checks for logical sequencing of dates.	The input record is processed and an error message is written in the log file.
Birth date cannot be after Discharge date	The program checks for logical sequencing of dates.	The input record is processed and an error message is written in the log file.
Birth date cannot precede 01/01/1900	Occurs when the birth date precedes 01/01/1900	A valid date is on or after 01/01/1900
Birth date is invalid	Any of the month, day, and year entries are not in the valid ranges.	The input record is processed and an error message is written in the log file.
Could not initialize run-time environment	Issue with installation.	The message is displayed on the screen and in the log file, and the program ends.
Discharge date cannot precede 01/01/1900	Occurs when the discharge date precedes 01/01/1900	A valid date is on or after 01/01/1900
Discharge date cannot precede Admit date	The program checks for logical sequencing of dates.	The input record is processed and an error message is written in the log file.
Discharge date cannot precede Birth date	The program checks for logical sequencing of dates.	The input record is processed and an error message is written in the log file.
Discharge date is invalid	Any of the month, day, and year entries are not in the valid ranges.	The input record is processed and an error message is written in the log file.

Message	Why it's generated	What happens
Discharge status is invalid	The discharge status field entry is invalid. For a list of valid discharge status values, see "Input file format" (page <a href="#">41</a> ).	The input record is processed and an error message is written in the log file.
Error opening input file: <filename>	The specified input file could not be opened or is missing.	The message is displayed on the screen and in the log file, and the program ends.
Error opening output file: <filename>	The specified output file could not be opened.	The message is displayed on the screen and the program ends.
Error reading input file: <filename>	The specified input file could not be read.	The message is displayed on the screen and in the log file, and the program ends.
Input filename must be different than the output filename	The same name is used for the input and output files located in the same directory.	The message is displayed on the screen and the program ends.
Invalid age	The entered or calculated age is less than 0 or greater than 124.	The input record is processed and an error message is written in the log file.
Invalid length of stay	The entered or calculated LOS is less than 0 or greater than 45291.	The input record is processed and an error message is written in the log file.
Invalid option or its value: <entered value>	An argument was entered without a processing option or a processing option without an argument.	The message is displayed on the screen and the program ends.
Invalid processing option: <entered value>	An option entered on the command line is not valid.	The message is displayed on the screen and the program ends.
Invalid sex	The sex field entry is invalid.	The input record is processed and an error message is written in the log file.
Output filename must be different than the upload filename	The same name is used for the output and upload files located in the same directory.	The message is displayed on the screen and the program ends.
Record number <value>: Invalid line length; record not processed.	A single-line format input record length cannot be more or less than 835 characters.	It skips the record and continues processing and an error message is written in the log file.
The processing option <entered value> should only be entered once.	Only one occurrence of each processing option is allowed.	The message is displayed on the screen and the program ends.

Message	Why it's generated	What happens
You have too many applications open. Close any unnecessary applications that are open.	The system does not have enough memory to run the MSG/MCE application.	The message is displayed on the screen and the program ends.

## Log files

The software generates a log file for every batch run and saves it where the product was installed.

By default, the log file is named msgmce.log, and will be located in the <Product install directory> folder, and contains the following information:

- A title line with the name and version number of the product
- Input filename
- Output filename (if specified)
- Upload filename (if specified)
- Run start time  
Date format = mm/dd/yyyy (e.g., 03/18/2014)
- Patient ID: <value> Acct# :<value> followed by error  
This line is repeated for however many error messages occur for the same patient record.
- Run end time

A sample log file is shown in the following figure.

```
MS Grouper with Medicare Code Editor Software vxx.x
Input file: test.in
Output file: test.out
Upload file: test.up
Start time: 05/29/2014 11:28:34
Patient ID 1      : Age is invalid. Calculated age must be between 0 and 124 years.
Patient ID 2      : Birth date cannot be after Discharge date.
Patient ID 2      : Discharge date cannot precede Birth date.
Patient ID 3      : LOS is invalid. Calculated LOS must be between 0 and 45291 days.
Patient ID 4      : Admit date is invalid.
End time: 05/29/2014 11:28:40
```

The log file can be viewed on your computer screen, saved, or printed as hard copy. The file can also be renamed if you want to save it since the log file produced in a batch run overwrites the previous one.

## Viewing the file

To display the contents of the log file on your screen

- ☐ At the system prompt in the directory where the log file was created, enter:

```
type <filename> | more
```

## Printing the file

To print the contents of the log file

- ☐ At the system prompt in the directory where the log file was created, enter:

```
print <filename>
```

## Renaming the file

### ***To rename a log file***

- ☐ At the system prompt in the directory where the file was created, enter:

```
rename <old filename> <new filename>
```



# Chapter 5: Accessibility Features

The Medicare Severity Grouper with Medicare Code Editor (MSG/MCE) software can process medical record data interactively entering one record at a time using the accessibility features discussed in this chapter.

Interactive processing enables you to correct invalid data or codes at the time a record is processed. This method uses a Microsoft® Windows® environment to enter data and view the output.

Users should have adequate training to use the MSG MCE product. The tab, arrow keys, and enter keys should be utilized to move within the product and when making selections. Prior knowledge of JAWS functionality is required.

Please refer to Chapter 3, "Interactive data processing (page [15](#))" for details on the functionality and use of the interactive method of claim processing.

## System requirements

The following are system requirements for accessibility:

- Windows-based Assistive Technology software
- JAVA® Access Bridge
- PATH environment variable having path to JRE folder

**Note:** Assistive Technology software needs to be running prior to using MSG MCE.

Effective with MSG MCE version 31, accessibility users must enable JAVA Access Bridge as follows:

### *To enable the JAVA Access Bridge*

**Note:** These steps assume you have already downloaded and installed MSG MCE.

1. Press **WINDOWS Key+R** to open the run dialog box.
2. Type "cmd" and press **ENTER**.
3. Type the following command and press **ENTER** (assuming you have installed MSGMCE to the default location):

```
cd C:\Program Files\MSG MCE SOFTWARE I10\jre\bin
```

4. Type "jabswitch -enable" and press **ENTER**.

A message will be displayed on the next line that tells you that the JAVA Access Bridge is enabled.

5. Type "exit" and press **ENTER** to return to the desktop.

6. Quit and restart JAWS. JAVA applications can now be used with JAWS.

---

**Warning:** Consult with your IT department if you are unsure as to how to go about making these changes. Altering the system's PATH to an alternative version of Java may affect your other software/programs that rely/relies on Java.

---

**To set up PATH environment**

1. Open the Control Panel.
2. Click System and Security, then System.
3. On the left panel, click Advanced system settings.
4. In the pop-up System Properties window, click Environment Variables.

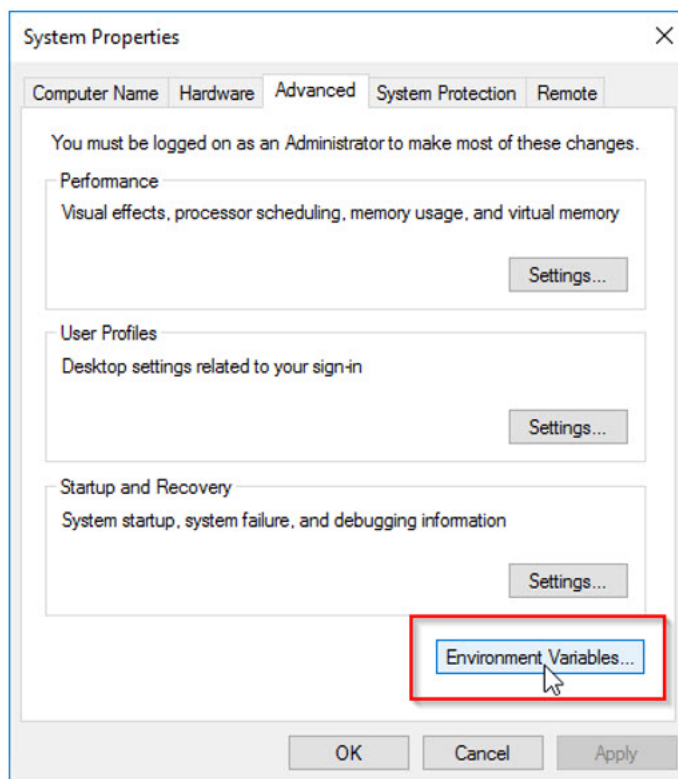


Figure 5: System properties window

5. Under System variables section, click Edit.

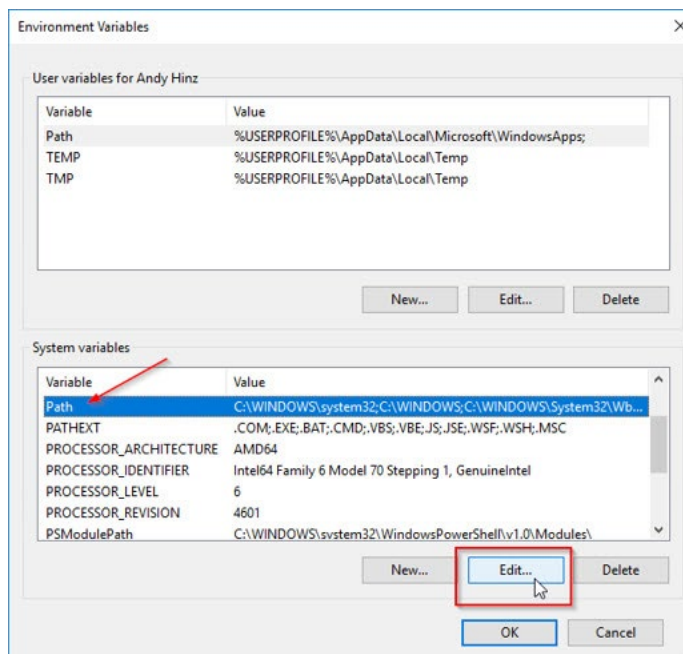


Figure 6: Environment variables window

6. In the pop-up Edit environment variable window, click New.
7. In the text field, paste the absolute path to where your Java JRE folder is located  
or  
Click on the Browse button to navigate to that folder.

Use your locally installed JRE, if you have one. Otherwise, you can use the path to the embedded JRE within the MSGMCE install folder. By default, this should be: C:\Program Files\MSG MCE SOFTWARE I10\jre\bin.

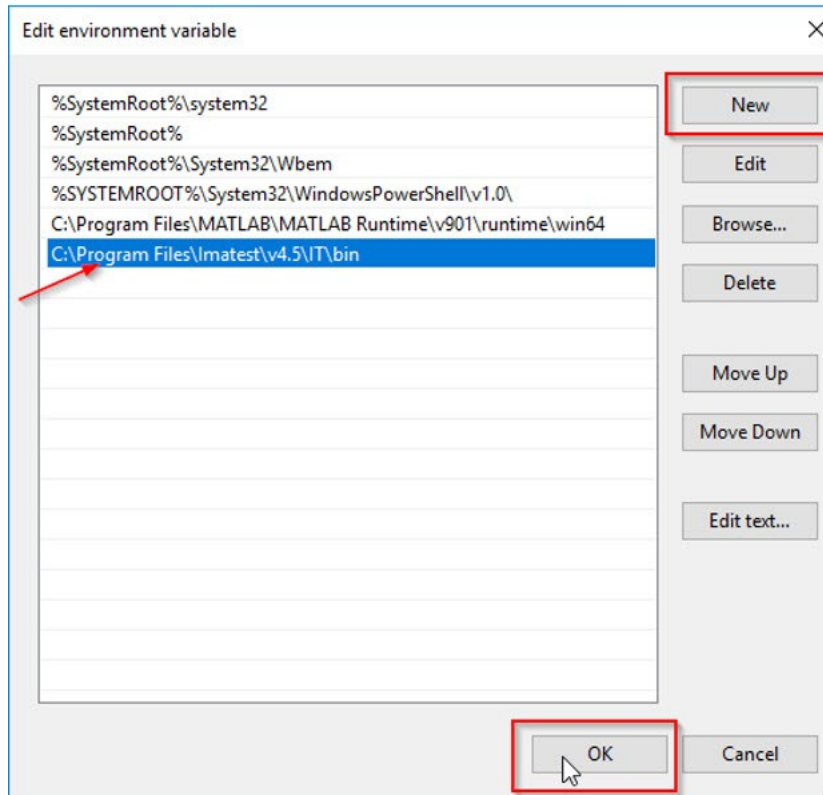


Figure 7: Edit environment variable window

8. Click OK.

The PATH environment should be set up.

# Appendix A: Current MDCs and DRGs

The following table lists the Major Diagnostic Categories (MDCs) for version 42.0 of the Medicare Severity (MS) grouper. The following tables list the Diagnosis Related Groups (DRGs) for version 42.0 of the grouper and their CMS-designated cost weights. The DRG cost weight is shown on the software output report (page [29](#)).

**Table 22. List of MDCs**

<b>MDC</b>	<b>Description</b>
01	Diseases & Disorders of the Nervous System
02	Diseases & Disorders of the Eye
03	Diseases & Disorders of the Ear, Nose, Mouth & Throat
04	Diseases & Disorders of the Respiratory System
05	Diseases & Disorders of the Circulatory System
06	Diseases & Disorders of the Digestive System
07	Diseases & Disorders of the Hepatobiliary System & Pancreas
08	Diseases & Disorders of the Musculoskeletal System & Connective Tissue
09	Diseases & Disorders of the Skin, Subcutaneous Tissue & Breast
10	Endocrine, Nutritional & Metabolic Diseases & Disorders
11	Diseases & Disorders of the Kidney & Urinary Tract
12	Diseases & Disorders of the Male Reproductive System
13	Diseases & Disorders of the Female Reproductive System
14	Pregnancy, Childbirth & the Puerperium
15	Newborns & Other Neonates with Conditions Originating in Perinatal Period
16	Diseases & Disorders of Blood, Blood Forming Organs, Immunologic Disorders
17	Myeloproliferative Diseases & Disorders, Poorly Differentiated Neoplasms
18	Infectious & Parasitic Diseases, Systemic or Unspecified Sites
19	Mental Diseases & Disorders
20	Alcohol/Drug Use & Alcohol/Drug Induced Organic Mental Disorders
21	Injuries, Poisonings & Toxic Effects of Drugs
22	Burns
23	Factors Influencing Health Status & Other Contacts with Health Services
24	Multiple Significant Trauma

MDC	Description
25	Human Immunodeficiency Virus Infections

## List of DRGs with cost weights

**Table 23. List of DRGs with cost weights**

<b>DRG, MDC, and DRG description</b>	<b>DRG cost weight</b>
001,MDC P,Heart Transplant or Implant of Heart Assist System with MCC	28.1683
002,MDC P,Heart Transplant or Implant of Heart Assist System without MCC	11.0197
003,MDC P,ECMO or Tracheostomy with MV >96 Hours or Principal Diagnosis Except Face, Mouth and Neck with Major O.R. Procedures	21.4316
004,MDC P,Tracheostomy with MV >96 Hours or Principal Diagnosis Except Face, Mouth and Neck without Major O.R. Procedures	14.1300
005,MDC P,Liver Transplant with MCC or Intestinal Transplant	10.6494
006,MDC P,Liver Transplant without MCC	4.8492
007,MDC P,Lung Transplant	13.0688
008,MDC P,Simultaneous Pancreas and Kidney Transplant	5.4411
010,MDC P,Pancreas Transplant	7.9730
011,MDC P,Tracheostomy for Face, Mouth and Neck Diagnoses or Laryngectomy with MCC	5.3959
012,MDC P,Tracheostomy for Face, Mouth and Neck Diagnoses or Laryngectomy with CC	4.1037
013,MDC P,Tracheostomy for Face, Mouth and Neck Diagnoses or Laryngectomy without CC/MCC	2.6500
014,MDC M,Allogeneic Bone Marrow Transplant	13.1018
016,MDC M,Autologous Bone Marrow Transplant with CC/MCC	6.0359
017,MDC M,Autologous Bone Marrow Transplant without CC/MCC	6.0359
018,MDC M,Chimeric Antigen Receptor (CAR) T-Cell and Other Immunotherapies	37.7128
019,MDC P,Simultaneous Pancreas and Kidney Transplant with Hemodialysis	7.9273
020,MDC 01P,Intracranial Vascular Procedures with Principal Diagnosis Hemorrhage with MCC	8.0611

<b>DRG, MDC, and DRG description</b>	<b>DRG cost weight</b>
021,MDC 01P,Intracranial Vascular Procedures with Principal Diagnosis Hemorrhage with CC	5.5273
022,MDC 01P,Intracranial Vascular Procedures with Principal Diagnosis Hemorrhage without CC/MCC	3.5304
023,MDC 01P,Craniotomy with Major Device Implant or Acute Complex CNS Principal Diagnosis with MCC or Chemotherapy Implant or Epilepsy with Neurostimulator	5.7051
024,MDC 01P,Craniotomy with Major Device Implant or Acute Complex CNS Principal Diagnosis without MCC	3.8017
025,MDC 01P,Craniotomy and Endovascular Intracranial Procedures with MCC	4.4723
026,MDC 01P,Craniotomy and Endovascular Intracranial Procedures with CC	3.0586
027,MDC 01P,Craniotomy and Endovascular Intracranial Procedures without CC/MCC	2.4678
028,MDC 01P,Spinal Procedures with MCC	6.0795
029,MDC 01P,Spinal Procedures with CC or Spinal Neurostimulators	3.3567
030,MDC 01P,Spinal Procedures without CC/MCC	2.2254
031,MDC 01P,Ventricular Shunt Procedures with MCC	4.1906
032,MDC 01P,Ventricular Shunt Procedures with CC	2.1356
033,MDC 01P,Ventricular Shunt Procedures without CC/MCC	1.5955
034,MDC 01P,Carotid Artery Stent Procedures with MCC	3.8887
035,MDC 01P,Carotid Artery Stent Procedures with CC	2.2748
036,MDC 01P,Carotid Artery Stent Procedures without CC/MCC	1.8331
037,MDC 01P,Extracranial Procedures with MCC	3.3209
038,MDC 01P,Extracranial Procedures with CC	1.6113
039,MDC 01P,Extracranial Procedures without CC/MCC	1.1382
040,MDC 01P,Peripheral, Cranial Nerve and Other Nervous System Procedures with MCC	3.7721
041,MDC 01P,Peripheral, Cranial Nerve and Other Nervous System Procedures with CC or Peripheral Neurostimulator	2.2582
042,MDC 01P,Peripheral, Cranial Nerve and Other Nervous System Procedures without CC/MCC	1.7576
052,MDC 01M,Spinal Disorders and Injuries with CC/MCC	2.0125

<b>DRG, MDC, and DRG description</b>	<b>DRG cost weight</b>
053,MDC 01M,Spinal Disorders and Injuries without CC/MCC	0.9214
054,MDC 01M,Nervous System Neoplasms with MCC	1.4991
055,MDC 01M,Nervous System Neoplasms without MCC	1.0910
056,MDC 01M,Degenerative Nervous System Disorders with MCC	2.5041
057,MDC 01M,Degenerative Nervous System Disorders without MCC	1.3344
058,MDC 01M,Multiple Sclerosis and Cerebellar Ataxia with MCC	1.8459
059,MDC 01M,Multiple Sclerosis and Cerebellar Ataxia with CC	1.2236
060,MDC 01M,Multiple Sclerosis and Cerebellar Ataxia without CC/MCC	0.8924
061,MDC 01M,Ischemic Stroke, Precerebral Occlusion or Transient Ischemia with Thrombolytic Agent with MCC	2.7034
062,MDC 01M,Ischemic Stroke, Precerebral Occlusion or Transient Ischemia with Thrombolytic Agent with CC	1.7809
063,MDC 01M,Ischemic Stroke, Precerebral Occlusion or Transient Ischemia with Thrombolytic Agent without CC/MCC	1.4048
064,MDC 01M,Intracranial Hemorrhage or Cerebral Infarction with MCC	1.9892
065,MDC 01M,Intracranial Hemorrhage or Cerebral Infarction with CC or TPA in 24 Hours	1.0169
066,MDC 01M,Intracranial Hemorrhage or Cerebral Infarction without CC/MCC	0.6883
067,MDC 01M,Nonspecific CVA and Precerebral Occlusion without Infarction with MCC	1.4549
068,MDC 01M,Nonspecific CVA and Precerebral Occlusion without Infarction without MCC	0.8815
069,MDC 01M,Transient Ischemia without Thrombolytic	0.8001
070,MDC 01M,Nonspecific Cerebrovascular Disorders with MCC	1.7388
071,MDC 01M,Nonspecific Cerebrovascular Disorders with CC	1.0539
072,MDC 01M,Nonspecific Cerebrovascular Disorders without CC/MCC	0.7502
073,MDC 01M,Cranial and Peripheral Nerve Disorders with MCC	1.5456
074,MDC 01M,Cranial and Peripheral Nerve Disorders without MCC	1.0424
075,MDC 01M,Viral Meningitis with CC/MCC	1.7224
076,MDC 01M,Viral Meningitis without CC/MCC	0.9169
077,MDC 01M,Hypertensive Encephalopathy with MCC	1.5463

<b>DRG, MDC, and DRG description</b>	<b>DRG cost weight</b>
078,MDC 01M,Hypertensive Encephalopathy with CC	0.9979
079,MDC 01M,Hypertensive Encephalopathy without CC/MCC	0.6667
080,MDC 01M,Nontraumatic Stupor and Coma with MCC	1.9878
081,MDC 01M,Nontraumatic Stupor and Coma without MCC	0.9048
082,MDC 01M,Traumatic Stupor and Coma >1 Hour with MCC	2.3202
083,MDC 01M,Traumatic Stupor and Coma >1 Hour with CC	1.3904
084,MDC 01M,Traumatic Stupor and Coma >1 Hour without CC/MCC	0.9561
085,MDC 01M,Traumatic Stupor and Coma <1 Hour with MCC	2.2660
086,MDC 01M,Traumatic Stupor and Coma <1 Hour with CC	1.3116
087,MDC 01M,Traumatic Stupor and Coma <1 Hour without CC/MCC	0.8840
088,MDC 01M,Concussion with MCC	1.4107
089,MDC 01M,Concussion with CC	1.0721
090,MDC 01M,Concussion without CC/MCC	0.8573
091,MDC 01M,Other Disorders of Nervous System with MCC	1.8229
092,MDC 01M,Other Disorders of Nervous System with CC	1.0587
093,MDC 01M,Other Disorders of Nervous System without CC/MCC	0.7893
094,MDC 01M,Bacterial and Tuberculous Infections of Nervous System with MCC	3.6487
095,MDC 01M,Bacterial and Tuberculous Infections of Nervous System with CC	2.3972
096,MDC 01M,Bacterial and Tuberculous Infections of Nervous System without CC/MCC	2.3972
097,MDC 01M,Non-Bacterial Infection of Nervous System Except Viral Meningitis with MCC	3.5846
098,MDC 01M,Non-Bacterial Infection of Nervous System Except Viral Meningitis with CC	2.1693
099,MDC 01M,Non-Bacterial Infection of Nervous System Except Viral Meningitis without CC/MCC	1.3933
100,MDC 01M,Seizures with MCC	1.9853
101,MDC 01M,Seizures without MCC	0.9217
102,MDC 01M,Headaches with MCC	1.1595
103,MDC 01M,Headaches without MCC	0.8502

<b>DRG, MDC, and DRG description</b>	<b>DRG cost weight</b>
113,MDC 02P,Orbital Procedures with CC/MCC	2.2566
114,MDC 02P,Orbital Procedures without CC/MCC	1.1821
115,MDC 02P,Extraocular Procedures Except Orbit	1.5310
116,MDC 02P,Intraocular Procedures with CC/MCC	1.6686
117,MDC 02P,Intraocular Procedures without CC/MCC	1.0786
121,MDC 02M,Acute Major Eye Infections with CC/MCC	1.1632
122,MDC 02M,Acute Major Eye Infections without CC/MCC	0.6783
123,MDC 02M,Neurological Eye Disorders	0.8032
124,MDC 02M,Other Disorders of the Eye with MCC or Thrombolytic Agent	1.3039
125,MDC 02M,Other Disorders of the Eye without MCC	0.8257
135,MDC 03P,Sinus and Mastoid Procedures with CC/MCC	2.4111
136,MDC 03P,Sinus and Mastoid Procedures without CC/MCC	0.9782
137,MDC 03P,Mouth Procedures with CC/MCC	1.3986
138,MDC 03P,Mouth Procedures without CC/MCC	0.8135
139,MDC 03P,Salivary Gland Procedures	1.3730
140,MDC 03P,Major Head and Neck Procedures with MCC	4.2292
141,MDC 03P,Major Head and Neck Procedures with CC	2.1485
142,MDC 03P,Major Head and Neck Procedures without CC/MCC	1.5724
143,MDC 03P,Other Ear, Nose, Mouth and Throat O.R. Procedures with MCC	3.3019
144,MDC 03P,Other Ear, Nose, Mouth and Throat O.R. Procedures with CC	1.7567
145,MDC 03P,Other Ear, Nose, Mouth and Throat O.R. Procedures without CC/MCC	1.1848
146,MDC 03M,Ear, Nose, Mouth and Throat Malignancy with MCC	2.2941
147,MDC 03M,Ear, Nose, Mouth and Throat Malignancy with CC	1.2448
148,MDC 03M,Ear, Nose, Mouth and Throat Malignancy without CC/MCC	0.8007
149,MDC 03M,Dysequilibrium	0.7475
150,MDC 03M,Epistaxis with MCC	1.3822
151,MDC 03M,Epistaxis without MCC	0.7580

<b>DRG, MDC, and DRG description</b>	<b>DRG cost weight</b>
152,MDC 03M,Otitis Media and URI with MCC	1.1348
153,MDC 03M,Otitis Media and URI without MCC	0.7117
154,MDC 03M,Other Ear, Nose, Mouth and Throat Diagnoses with MCC	1.6263
155,MDC 03M,Other Ear, Nose, Mouth and Throat Diagnoses with CC	0.9336
156,MDC 03M,Other Ear, Nose, Mouth and Throat Diagnoses without CC/MCC	0.6724
157,MDC 03M,Dental and Oral Diseases with MCC	1.6375
158,MDC 03M,Dental and Oral Diseases with CC	0.9406
159,MDC 03M,Dental and Oral Diseases without CC/MCC	0.6596
163,MDC 04P,Major Chest Procedures with MCC	4.6092
164,MDC 04P,Major Chest Procedures with CC	2.5170
165,MDC 04P,Major Chest Procedures without CC/MCC	1.8640
166,MDC 04P,Other Respiratory System O.R. Procedures with MCC	3.8503
167,MDC 04P,Other Respiratory System O.R. Procedures with CC	1.8272
168,MDC 04P,Other Respiratory System O.R. Procedures without CC/MCC	1.3539
173,MDC 04P,Ultrasound Accelerated and Other Thrombolysis with Principal Diagnosis Pulmonary Embolism	3.0686
175,MDC 04M,Pulmonary Embolism with MCC or Acute Cor Pulmonale	1.4091
176,MDC 04M,Pulmonary Embolism without MCC	0.8145
177,MDC 04M,Respiratory Infections and Inflammations with MCC	1.6165
178,MDC 04M,Respiratory Infections and Inflammations with CC	0.9921
179,MDC 04M,Respiratory Infections and Inflammations without CC/MCC	0.7697
180,MDC 04M,Respiratory Neoplasms with MCC	1.7478
181,MDC 04M,Respiratory Neoplasms with CC	1.1103
182,MDC 04M,Respiratory Neoplasms without CC/MCC	0.8375
183,MDC 04M,Major Chest Trauma with MCC	1.5873
184,MDC 04M,Major Chest Trauma with CC	1.0681
185,MDC 04M,Major Chest Trauma without CC/MCC	0.7777
186,MDC 04M,Pleural Effusion with MCC	1.5800

<b>DRG, MDC, and DRG description</b>	<b>DRG cost weight</b>
187,MDC 04M,Pleural Effusion with CC	1.0040
188,MDC 04M,Pleural Effusion without CC/MCC	0.7342
189,MDC 04M,Pulmonary Edema and Respiratory Failure	1.2374
190,MDC 04M,Chronic Obstructive Pulmonary Disease with MCC	1.1230
191,MDC 04M,Chronic Obstructive Pulmonary Disease with CC	0.8591
192,MDC 04M,Chronic Obstructive Pulmonary Disease without CC/MCC	0.6472
193,MDC 04M,Simple Pneumonia and Pleurisy with MCC	1.3177
194,MDC 04M,Simple Pneumonia and Pleurisy with CC	0.8200
195,MDC 04M,Simple Pneumonia and Pleurisy without CC/MCC	0.6227
196,MDC 04M,Interstitial Lung Disease with MCC	1.8841
197,MDC 04M,Interstitial Lung Disease with CC	0.9900
198,MDC 04M,Interstitial Lung Disease without CC/MCC	0.7004
199,MDC 04M,Pneumothorax with MCC	1.7653
200,MDC 04M,Pneumothorax with CC	1.1075
201,MDC 04M,Pneumothorax without CC/MCC	0.6771
202,MDC 04M,Bronchitis and Asthma with CC/MCC	0.9667
203,MDC 04M,Bronchitis and Asthma without CC/MCC	0.6966
204,MDC 04M,Respiratory Signs and Symptoms	0.8110
205,MDC 04M,Other Respiratory System Diagnoses with MCC	1.8878
206,MDC 04M,Other Respiratory System Diagnoses without MCC	0.9058
207,MDC 04M,Respiratory System Diagnosis with Ventilator Support >96 Hours	6.4672
208,MDC 04M,Respiratory System Diagnosis with Ventilator Support <=96 Hours	2.6838
212,MDC 05P,Concomitant Aortic and Mitral Valve Procedures	10.8939
215,MDC 05P,Other Heart Assist System Implant	10.5948
216,MDC 05P,Cardiac Valve and Other Major Cardiothoracic Procedures with Cardiac Catheterization with MCC	9.6511
217,MDC 05P,Cardiac Valve and Other Major Cardiothoracic Procedures with Cardiac Catheterization with CC	6.4579
218,MDC 05P,Cardiac Valve and Other Major Cardiothoracic Procedures with Cardiac Catheterization without CC/MCC	5.9493

<b>DRG, MDC, and DRG description</b>	<b>DRG cost weight</b>
219,MDC 05P,Cardiac Valve and Other Major Cardiothoracic Procedures without Cardiac Catheterization with MCC	7.7375
220,MDC 05P,Cardiac Valve and Other Major Cardiothoracic Procedures without Cardiac Catheterization with CC	5.2967
221,MDC 05P,Cardiac Valve and Other Major Cardiothoracic Procedures without Cardiac Catheterization without CC/MCC	4.5926
228,MDC 05P,Other Cardiothoracic Procedures with MCC	4.9833
229,MDC 05P,Other Cardiothoracic Procedures without MCC	3.1063
231,MDC 05P,Coronary Bypass with PTCA with MCC	8.4739
232,MDC 05P,Coronary Bypass with PTCA without MCC	6.1087
233,MDC 05P,Coronary Bypass with Cardiac Catheterization or Open Ablation with MCC	7.8164
234,MDC 05P,Coronary Bypass with Cardiac Catheterization or Open Ablation without MCC	5.3202
235,MDC 05P,Coronary Bypass without Cardiac Catheterization with MCC	5.8842
236,MDC 05P,Coronary Bypass without Cardiac Catheterization without MCC	4.1121
239,MDC 05P,Amputation for Circulatory System Disorders Except Upper Limb and Toe with MCC	5.0369
240,MDC 05P,Amputation for Circulatory System Disorders Except Upper Limb and Toe with CC	2.9122
241,MDC 05P,Amputation for Circulatory System Disorders Except Upper Limb and Toe without CC/MCC	1.5099
242,MDC 05P,Permanent Cardiac Pacemaker Implant with MCC	3.3920
243,MDC 05P,Permanent Cardiac Pacemaker Implant with CC	2.2528
244,MDC 05P,Permanent Cardiac Pacemaker Implant without CC/MCC	1.8047
245,MDC 05P,AICD Generator Procedures	4.8868
250,MDC 05P,Percutaneous Cardiovascular Procedures without Intraluminal Device with MCC	2.3126
251,MDC 05P,Percutaneous Cardiovascular Procedures without Intraluminal Device without MCC	1.5626
252,MDC 05P,Other Vascular Procedures with MCC	3.4304
253,MDC 05P,Other Vascular Procedures with CC	2.5530

<b>DRG, MDC, and DRG description</b>	<b>DRG cost weight</b>
254,MDC 05P,Other Vascular Procedures without CC/MCC	1.7494
255,MDC 05P,Upper Limb and Toe Amputation for Circulatory System Disorders with MCC	2.6165
256,MDC 05P,Upper Limb and Toe Amputation for Circulatory System Disorders with CC	1.6937
257,MDC 05P,Upper Limb and Toe Amputation for Circulatory System Disorders without CC/MCC	0.8919
258,MDC 05P,Cardiac Pacemaker Device Replacement with MCC	2.8055
259,MDC 05P,Cardiac Pacemaker Device Replacement without MCC	1.7577
260,MDC 05P,Cardiac Pacemaker Revision Except Device Replacement with MCC	3.4062
261,MDC 05P,Cardiac Pacemaker Revision Except Device Replacement with CC	1.8976
262,MDC 05P,Cardiac Pacemaker Revision Except Device Replacement without CC/MCC	1.5178
263,MDC 05P,Vein Ligation and Stripping	2.6821
264,MDC 05P,Other Circulatory System O.R. Procedures	3.4951
265,MDC 05P,AICD Lead Procedures	3.5672
266,MDC 05P,Endovascular Cardiac Valve Replacement and Supplement Procedures with MCC	5.9908
267,MDC 05P,Endovascular Cardiac Valve Replacement and Supplement Procedures without MCC	4.7047
268,MDC 05P,Aortic and Heart Assist Procedures Except Pulsation Balloon with MCC	6.6676
269,MDC 05P,Aortic and Heart Assist Procedures Except Pulsation Balloon without MCC	4.1607
270,MDC 05P,Other Major Cardiovascular Procedures with MCC	5.1330
271,MDC 05P,Other Major Cardiovascular Procedures with CC	3.4444
272,MDC 05P,Other Major Cardiovascular Procedures without CC/MCC	2.5022
273,MDC 05P,Percutaneous and Other Intracardiac Procedures with MCC	3.9103
274,MDC 05P,Percutaneous and Other Intracardiac Procedures without MCC	3.1210

<b>DRG, MDC, and DRG description</b>	<b>DRG cost weight</b>
275,MDC 05P,Cardiac Defibrillator Implant with Cardiac Catheterization and MCC	7.0670
276,MDC 05P,Cardiac Defibrillator Implant with MCC or Carotid Sinus Neurostimulator	6.1944
277,MDC 05P,Cardiac Defibrillator Implant without MCC	4.6519
278,MDC 05P,Ultrasound Accelerated and Other Thrombolysis of Peripheral Vascular Structures with MCC	5.0033
279,MDC 05P,Ultrasound Accelerated and Other Thrombolysis of Peripheral Vascular Structures without MCC	3.2044
280,MDC 05M,Acute Myocardial Infarction, Discharged Alive with MCC	1.6414
281,MDC 05M,Acute Myocardial Infarction, Discharged Alive with CC	0.9218
282,MDC 05M,Acute Myocardial Infarction, Discharged Alive without CC/MCC	0.7251
283,MDC 05M,Acute Myocardial Infarction, Expired with MCC	1.9554
284,MDC 05M,Acute Myocardial Infarction, Expired with CC	0.7410
285,MDC 05M,Acute Myocardial Infarction, Expired without CC/MCC	0.5614
286,MDC 05M,Circulatory Disorders Except AMI, with Cardiac Catheterization with MCC	2.2133
287,MDC 05M,Circulatory Disorders Except AMI, with Cardiac Catheterization without MCC	1.0897
288,MDC 05M,Acute and Subacute Endocarditis with MCC	2.7315
289,MDC 05M,Acute and Subacute Endocarditis with CC	1.5767
290,MDC 05M,Acute and Subacute Endocarditis without CC/MCC	0.9790
291,MDC 05M,Heart Failure and Shock with MCC	1.3048
292,MDC 05M,Heart Failure and Shock with CC	0.8612
293,MDC 05M,Heart Failure and Shock without CC/MCC	0.5487
294,MDC 05M,Deep Vein Thrombophlebitis with CC/MCC	1.2280
295,MDC 05M,Deep Vein Thrombophlebitis without CC/MCC	0.7898
296,MDC 05M,Cardiac Arrest, Unexplained with MCC	1.6384
297,MDC 05M,Cardiac Arrest, Unexplained with CC	0.7044
298,MDC 05M,Cardiac Arrest, Unexplained without CC/MCC	0.4417
299,MDC 05M,Peripheral Vascular Disorders with MCC	1.6176

<b>DRG, MDC, and DRG description</b>	<b>DRG cost weight</b>
300,MDC 05M,Peripheral Vascular Disorders with CC	1.0706
301,MDC 05M,Peripheral Vascular Disorders without CC/MCC	0.7134
302,MDC 05M,Atherosclerosis with MCC	1.1633
303,MDC 05M,Atherosclerosis without MCC	0.6724
304,MDC 05M,Hypertension with MCC	1.1748
305,MDC 05M,Hypertension without MCC	0.7507
306,MDC 05M,Cardiac Congenital and Valvular Disorders with MCC	1.4974
307,MDC 05M,Cardiac Congenital and Valvular Disorders without MCC	0.9264
308,MDC 05M,Cardiac Arrhythmia and Conduction Disorders with MCC	1.2059
309,MDC 05M,Cardiac Arrhythmia and Conduction Disorders with CC	0.7393
310,MDC 05M,Cardiac Arrhythmia and Conduction Disorders without CC/MCC	0.5595
311,MDC 05M,Angina Pectoris	0.6983
312,MDC 05M,Syncope and Collapse	0.8713
313,MDC 05M,Chest Pain	0.7134
314,MDC 05M,Other Circulatory System Diagnoses with MCC	2.1535
315,MDC 05M,Other Circulatory System Diagnoses with CC	0.9623
316,MDC 05M,Other Circulatory System Diagnoses without CC/MCC	0.6827
317,MDC 05P,Concomitant Left Atrial Appendage Closure and Cardiac Ablation	6.1864
319,MDC 05P,Other Endovascular Cardiac Valve Procedures with MCC	4.3928
320,MDC 05P,Other Endovascular Cardiac Valve Procedures without MCC	2.3148
321,MDC 05P,Percutaneous Cardiovascular Procedures with Intraluminal Device with MCC or 4+ Arteries/Intraluminal Devices	2.8468
322,MDC 05P,Percutaneous Cardiovascular Procedures with Intraluminal Device without MCC	1.8092
323,MDC 05P,Coronary Intravascular Lithotripsy with Intraluminal Device with MCC	4.2594
324,MDC 05P,Coronary Intravascular Lithotripsy with Intraluminal Device without MCC	3.1951
325,MDC 05P,Coronary Intravascular Lithotripsy without Intraluminal Device	2.8621

<b>DRG, MDC, and DRG description</b>	<b>DRG cost weight</b>
326,MDC 06P,Stomach, Esophageal and Duodenal Procedures with MCC	5.0790
327,MDC 06P,Stomach, Esophageal and Duodenal Procedures with CC	2.4281
328,MDC 06P,Stomach, Esophageal and Duodenal Procedures without CC/MCC	1.5935
329,MDC 06P,Major Small and Large Bowel Procedures with MCC	4.5919
330,MDC 06P,Major Small and Large Bowel Procedures with CC	2.3637
331,MDC 06P,Major Small and Large Bowel Procedures without CC/MCC	1.6510
332,MDC 06P,Rectal Resection with MCC	3.4687
333,MDC 06P,Rectal Resection with CC	2.1253
334,MDC 06P,Rectal Resection without CC/MCC	1.6586
335,MDC 06P,Peritoneal Adhesiolysis with MCC	3.6234
336,MDC 06P,Peritoneal Adhesiolysis with CC	2.1123
337,MDC 06P,Peritoneal Adhesiolysis without CC/MCC	1.5351
344,MDC 06P,Minor Small and Large Bowel Procedures with MCC	2.6945
345,MDC 06P,Minor Small and Large Bowel Procedures with CC	1.4887
346,MDC 06P,Minor Small and Large Bowel Procedures without CC/MCC	1.2453
347,MDC 06P,Anal and Stomal Procedures with MCC	2.3668
348,MDC 06P,Anal and Stomal Procedures with CC	1.2589
349,MDC 06P,Anal and Stomal Procedures without CC/MCC	0.8809
350,MDC 06P,Inguinal and Femoral Hernia Procedures with MCC	2.4187
351,MDC 06P,Inguinal and Femoral Hernia Procedures with CC	1.5045
352,MDC 06P,Inguinal and Femoral Hernia Procedures without CC/MCC	1.1026
353,MDC 06P,Hernia Procedures Except Inguinal and Femoral with MCC	2.9330
354,MDC 06P,Hernia Procedures Except Inguinal and Femoral with CC	1.7011
355,MDC 06P,Hernia Procedures Except Inguinal and Femoral without CC/MCC	1.3332
356,MDC 06P,Other Digestive System O.R. Procedures with MCC	4.2657
357,MDC 06P,Other Digestive System O.R. Procedures with CC	2.2520
358,MDC 06P,Other Digestive System O.R. Procedures without CC/MCC	1.3551
368,MDC 06M,Major Esophageal Disorders with MCC	1.6700
369,MDC 06M,Major Esophageal Disorders with CC	1.0176

<b>DRG, MDC, and DRG description</b>	<b>DRG cost weight</b>
370,MDC 06M,Major Esophageal Disorders without CC/MCC	0.6980
371,MDC 06M,Major Gastrointestinal Disorders and Peritoneal Infections with MCC	1.7480
372,MDC 06M,Major Gastrointestinal Disorders and Peritoneal Infections with CC	1.0293
373,MDC 06M,Major Gastrointestinal Disorders and Peritoneal Infections without CC/MCC	0.7254
374,MDC 06M,Digestive Malignancy with MCC	2.1114
375,MDC 06M,Digestive Malignancy with CC	1.2287
376,MDC 06M,Digestive Malignancy without CC/MCC	0.8830
377,MDC 06M,Gastrointestinal Hemorrhage with MCC	1.8182
378,MDC 06M,Gastrointestinal Hemorrhage with CC	0.9859
379,MDC 06M,Gastrointestinal Hemorrhage without CC/MCC	0.6367
380,MDC 06M,Complicated Peptic Ulcer with MCC	1.9243
381,MDC 06M,Complicated Peptic Ulcer with CC	1.0891
382,MDC 06M,Complicated Peptic Ulcer without CC/MCC	0.7493
383,MDC 06M,Uncomplicated Peptic Ulcer with MCC	1.2642
384,MDC 06M,Uncomplicated Peptic Ulcer without MCC	0.8696
385,MDC 06M,Inflammatory Bowel Disease with MCC	1.6248
386,MDC 06M,Inflammatory Bowel Disease with CC	0.9925
387,MDC 06M,Inflammatory Bowel Disease without CC/MCC	0.6703
388,MDC 06M,Gastrointestinal Obstruction with MCC	1.4699
389,MDC 06M,Gastrointestinal Obstruction with CC	0.8016
390,MDC 06M,Gastrointestinal Obstruction without CC/MCC	0.5472
391,MDC 06M,Esophagitis, Gastroenteritis and Miscellaneous Digestive Disorders with MCC	1.2845
392,MDC 06M,Esophagitis, Gastroenteritis and Miscellaneous Digestive Disorders without MCC	0.7803
393,MDC 06M,Other Digestive System Diagnoses with MCC	1.6560
394,MDC 06M,Other Digestive System Diagnoses with CC	0.9413
395,MDC 06M,Other Digestive System Diagnoses without CC/MCC	0.6364
397,MDC 06P,Appendix Procedures with MCC	2.4778

<b>DRG, MDC, and DRG description</b>	<b>DRG cost weight</b>
398,MDC 06P,Appendix Procedures with CC	1.5132
399,MDC 06P,Appendix Procedures without CC/MCC	1.1238
402,MDC 08P,Single Level Combined Anterior and Posterior Spinal Fusion Except Cervical	3.9122
405,MDC 07P,Pancreas, Liver and Shunt Procedures with MCC	5.4287
406,MDC 07P,Pancreas, Liver and Shunt Procedures with CC	2.8084
407,MDC 07P,Pancreas, Liver and Shunt Procedures without CC/MCC	2.1358
408,MDC 07P,Biliary Tract Procedures Except Only Cholecystectomy with or without C.D.E. with MCC	3.5013
409,MDC 07P,Biliary Tract Procedures Except Only Cholecystectomy with or without C.D.E. with CC	2.0965
410,MDC 07P,Biliary Tract Procedures Except Only Cholecystectomy with or without C.D.E. without CC/MCC	1.5511
411,MDC 07P,Cholecystectomy with C.D.E. with MCC	2.7364
412,MDC 07P,Cholecystectomy with C.D.E. with CC	2.1316
413,MDC 07P,Cholecystectomy with C.D.E. without CC/MCC	1.6625
414,MDC 07P,Cholecystectomy Except By Laparoscope without C.D.E. with MCC	3.5038
415,MDC 07P,Cholecystectomy Except By Laparoscope without C.D.E. with CC	1.9781
416,MDC 07P,Cholecystectomy Except By Laparoscope without C.D.E. without CC/MCC	1.3702
417,MDC 07P,Laparoscopic Cholecystectomy without C.D.E. with MCC	2.3765
418,MDC 07P,Laparoscopic Cholecystectomy without C.D.E. with CC	1.6584
419,MDC 07P,Laparoscopic Cholecystectomy without C.D.E. without CC/MCC	1.3176
420,MDC 07P,Hepatobiliary Diagnostic Procedures with MCC	3.5295
421,MDC 07P,Hepatobiliary Diagnostic Procedures with CC	1.6376
422,MDC 07P,Hepatobiliary Diagnostic Procedures without CC/MCC	1.4694
423,MDC 07P,Other Hepatobiliary or Pancreas O.R. Procedures with MCC	4.0674
424,MDC 07P,Other Hepatobiliary or Pancreas O.R. Procedures with CC	2.2833

<b>DRG, MDC, and DRG description</b>	<b>DRG cost weight</b>
425,MDC 07P,Other Hepatobiliary or Pancreas O.R. Procedures without CC/MCC	1.5458
426,MDC 08P,Multiple Level Combined Anterior and Posterior Spinal Fusion Except Cervical with MCC or Custom-Made Anatomically Designed Interbody Fusion Device	10.4754
427,MDC 08P,Multiple Level Combined Anterior and Posterior Spinal Fusion Except Cervical with CC	7.1027
428,MDC 08P,Multiple Level Combined Anterior and Posterior Spinal Fusion Except Cervical without CC/MCC	5.5041
429,MDC 08P,Combined Anterior and Posterior Cervical Spinal Fusion with MCC	8.3406
430,MDC 08P,Combined Anterior and Posterior Cervical Spinal Fusion without MCC	5.4705
432,MDC 07M,Cirrhosis and Alcoholic Hepatitis with MCC	1.9591
433,MDC 07M,Cirrhosis and Alcoholic Hepatitis with CC	1.0698
434,MDC 07M,Cirrhosis and Alcoholic Hepatitis without CC/MCC	0.6965
435,MDC 07M,Malignancy of Hepatobiliary System or Pancreas with MCC	1.8246
436,MDC 07M,Malignancy of Hepatobiliary System or Pancreas with CC	1.1277
437,MDC 07M,Malignancy of Hepatobiliary System or Pancreas without CC/MCC	0.7852
438,MDC 07M,Disorders of Pancreas Except Malignancy with MCC	1.6637
439,MDC 07M,Disorders of Pancreas Except Malignancy with CC	0.8602
440,MDC 07M,Disorders of Pancreas Except Malignancy without CC/MCC	0.6151
441,MDC 07M,Disorders of Liver Except Malignancy, Cirrhosis or Alcoholic Hepatitis with MCC	1.8904
442,MDC 07M,Disorders of Liver Except Malignancy, Cirrhosis or Alcoholic Hepatitis with CC	0.9662
443,MDC 07M,Disorders of Liver Except Malignancy, Cirrhosis or Alcoholic Hepatitis without CC/MCC	0.7027
444,MDC 07M,Disorders of the Biliary Tract with MCC	1.6844
445,MDC 07M,Disorders of the Biliary Tract with CC	1.0845
446,MDC 07M,Disorders of the Biliary Tract without CC/MCC	0.7973

<b>DRG, MDC, and DRG description</b>	<b>DRG cost weight</b>
447,MDC 08P,Multiple Level Spinal Fusion Except Cervical with MCC or Custom-Made Anatomically Designed Interbody Fusion Device	6.7047
448,MDC 08P,Multiple Level Spinal Fusion Except Cervical without MCC	4.0835
450,MDC 08P,Single Level Spinal Fusion Except Cervical with MCC or Custom-Made Anatomically Designed Interbody Fusion Device	5.1501
451,MDC 08P,Single Level Spinal Fusion Except Cervical without MCC	3.0860
456,MDC 08P,Spinal Fusion Except Cervical with Spinal Curvature, Malignancy, Infection or Extensive Fusions with MCC	8.4692
457,MDC 08P,Spinal Fusion Except Cervical with Spinal Curvature, Malignancy, Infection or Extensive Fusions with CC	5.7394
458,MDC 08P,Spinal Fusion Except Cervical with Spinal Curvature, Malignancy, Infection or Extensive Fusions without CC/MCC	4.3180
461,MDC 08P,Bilateral or Multiple Major Joint Procedures of Lower Extremity with MCC	6.1367
462,MDC 08P,Bilateral or Multiple Major Joint Procedures of Lower Extremity without MCC	2.8638
463,MDC 08P,Wound Debridement and Skin Graft Except Hand for Musculoskeletal and Connective Tissue Disorders with MCC	5.4010
464,MDC 08P,Wound Debridement and Skin Graft Except Hand for Musculoskeletal and Connective Tissue Disorders with CC	2.9486
465,MDC 08P,Wound Debridement and Skin Graft Except Hand for Musculoskeletal and Connective Tissue Disorders without CC/MCC	1.7361
466,MDC 08P,Revision of Hip or Knee Replacement with MCC	5.0946
467,MDC 08P,Revision of Hip or Knee Replacement with CC	3.4252
468,MDC 08P,Revision of Hip or Knee Replacement without CC/MCC	2.6233
469,MDC 08P,Major Hip and Knee Joint Replacement or Reattachment of Lower Extremity with MCC or Total Ankle Replacement	3.2687
470,MDC 08P,Major Hip and Knee Joint Replacement or Reattachment of Lower Extremity without MCC	1.8855
471,MDC 08P,Cervical Spinal Fusion with MCC	4.8573
472,MDC 08P,Cervical Spinal Fusion with CC	2.8972
473,MDC 08P,Cervical Spinal Fusion without CC/MCC	2.3674
474,MDC 08P,Amputation for Musculoskeletal System and Connective Tissue Disorders with MCC	4.4847

<b>DRG, MDC, and DRG description</b>	<b>DRG cost weight</b>
475,MDC 08P,Amputation for Musculoskeletal System and Connective Tissue Disorders with CC	2.1573
476,MDC 08P,Amputation for Musculoskeletal System and Connective Tissue Disorders without CC/MCC	1.1631
477,MDC 08P,Biopsies of Musculoskeletal System and Connective Tissue with MCC	3.4390
478,MDC 08P,Biopsies of Musculoskeletal System and Connective Tissue with CC	2.3386
479,MDC 08P,Biopsies of Musculoskeletal System and Connective Tissue without CC/MCC	1.7758
480,MDC 08P,Hip and Femur Procedures Except Major Joint with MCC	2.9410
481,MDC 08P,Hip and Femur Procedures Except Major Joint with CC	2.0749
482,MDC 08P,Hip and Femur Procedures Except Major Joint without CC/MCC	1.5864
483,MDC 08P,Major Joint or Limb Reattachment Procedures of Upper Extremities	2.5482
485,MDC 08P,Knee Procedures with Principal Diagnosis of Infection with MCC	3.2193
486,MDC 08P,Knee Procedures with Principal Diagnosis of Infection with CC	2.1209
487,MDC 08P,Knee Procedures with Principal Diagnosis of Infection without CC/MCC	1.5802
488,MDC 08P,Knee Procedures without Principal Diagnosis of Infection with CC/MCC	1.9654
489,MDC 08P,Knee Procedures without Principal Diagnosis of Infection without CC/MCC	1.2384
492,MDC 08P,Lower Extremity and Humerus Procedures Except Hip, Foot and Femur with MCC	3.5512
493,MDC 08P,Lower Extremity and Humerus Procedures Except Hip, Foot and Femur with CC	2.4010
494,MDC 08P,Lower Extremity and Humerus Procedures Except Hip, Foot and Femur without CC/MCC	1.8854
495,MDC 08P,Local Excision and Removal of Internal Fixation Devices Except Hip and Femur with MCC	3.5206
496,MDC 08P,Local Excision and Removal of Internal Fixation Devices Except Hip and Femur with CC	1.9730

<b>DRG, MDC, and DRG description</b>	<b>DRG cost weight</b>
497,MDC 08P,Local Excision and Removal of Internal Fixation Devices Except Hip and Femur without CC/MCC	1.3426
498,MDC 08P,Local Excision and Removal of Internal Fixation Devices of Hip and Femur with CC/MCC	2.5249
499,MDC 08P,Local Excision and Removal of Internal Fixation Devices of Hip and Femur without CC/MCC	1.1608
500,MDC 08P,Soft Tissue Procedures with MCC	3.1687
501,MDC 08P,Soft Tissue Procedures with CC	1.7847
502,MDC 08P,Soft Tissue Procedures without CC/MCC	1.3972
503,MDC 08P,Foot Procedures with MCC	2.6466
504,MDC 08P,Foot Procedures with CC	1.7550
505,MDC 08P,Foot Procedures without CC/MCC	1.7550
506,MDC 08P,Major Thumb or Joint Procedures	1.4991
507,MDC 08P,Major Shoulder or Elbow Joint Procedures with CC/MCC	1.9382
508,MDC 08P,Major Shoulder or Elbow Joint Procedures without CC/MCC	1.2906
509,MDC 08P,Arthroscopy	1.7567
510,MDC 08P,Shoulder, Elbow or Forearm Procedures, Except Major Joint Procedures with MCC	2.8581
511,MDC 08P,Shoulder, Elbow or Forearm Procedures, Except Major Joint Procedures with CC	1.9612
512,MDC 08P,Shoulder, Elbow or Forearm Procedures, Except Major Joint Procedures without CC/MCC	1.6078
513,MDC 08P,Hand or Wrist Procedures, Except Major Thumb or Joint Procedures with CC/MCC	1.5056
514,MDC 08P,Hand or Wrist Procedures, Except Major Thumb or Joint Procedures without CC/MCC	1.0196
515,MDC 08P,Other Musculoskeletal System and Connective Tissue O.R. Procedures with MCC	3.0924
516,MDC 08P,Other Musculoskeletal System and Connective Tissue O.R. Procedures with CC	2.0117
517,MDC 08P,Other Musculoskeletal System and Connective Tissue O.R. Procedures without CC/MCC	1.4927

<b>DRG, MDC, and DRG description</b>	<b>DRG cost weight</b>
518,MDC 08P,Back and Neck Procedures Except Spinal Fusion with MCC or Disc Device or Neurostimulator	3.5840
519,MDC 08P,Back and Neck Procedures Except Spinal Fusion with CC	1.9719
520,MDC 08P,Back and Neck Procedures Except Spinal Fusion without CC/MCC	1.4332
521,MDC 08P,Hip Replacement with Principal Diagnosis of Hip Fracture with MCC	2.9147
522,MDC 08P,Hip Replacement with Principal Diagnosis of Hip Fracture without MCC	2.1081
533,MDC 08M,Fractures of Femur with MCC	1.5249
534,MDC 08M,Fractures of Femur without MCC	0.8140
535,MDC 08M,Fractures of Hip and Pelvis with MCC	1.3299
536,MDC 08M,Fractures of Hip and Pelvis without MCC	0.8109
537,MDC 08M,Sprains, Strains, and Dislocations of Hip, Pelvis and Thigh with CC/MCC	0.9190
538,MDC 08M,Sprains, Strains, and Dislocations of Hip, Pelvis and Thigh without CC/MCC	0.6715
539,MDC 08M,Osteomyelitis with MCC	2.0224
540,MDC 08M,Osteomyelitis with CC	1.2941
541,MDC 08M,Osteomyelitis without CC/MCC	0.8749
542,MDC 08M,Pathological Fractures and Musculoskeletal and Connective Tissue Malignancy with MCC	1.8651
543,MDC 08M,Pathological Fractures and Musculoskeletal and Connective Tissue Malignancy with CC	1.0609
544,MDC 08M,Pathological Fractures and Musculoskeletal and Connective Tissue Malignancy without CC/MCC	0.7557
545,MDC 08M,Connective Tissue Disorders with MCC	2.5269
546,MDC 08M,Connective Tissue Disorders with CC	1.1577
547,MDC 08M,Connective Tissue Disorders without CC/MCC	0.7462
548,MDC 08M,Septic Arthritis with MCC	2.0146
549,MDC 08M,Septic Arthritis with CC	1.2051
550,MDC 08M,Septic Arthritis without CC/MCC	0.8621
551,MDC 08M,Medical Back Problems with MCC	1.7064

<b>DRG, MDC, and DRG description</b>	<b>DRG cost weight</b>
552,MDC 08M,Medical Back Problems without MCC	0.9638
553,MDC 08M,Bone Diseases and Arthropathies with MCC	1.3060
554,MDC 08M,Bone Diseases and Arthropathies without MCC	0.8346
555,MDC 08M,Signs and Symptoms of Musculoskeletal System and Connective Tissue with MCC	1.3466
556,MDC 08M,Signs and Symptoms of Musculoskeletal System and Connective Tissue without MCC	0.8165
557,MDC 08M,Tendonitis, Myositis and Bursitis with MCC	1.5497
558,MDC 08M,Tendonitis, Myositis and Bursitis without MCC	0.8638
559,MDC 08M,Aftercare, Musculoskeletal System and Connective Tissue with MCC	1.8563
560,MDC 08M,Aftercare, Musculoskeletal System and Connective Tissue with CC	1.1387
561,MDC 08M,Aftercare, Musculoskeletal System and Connective Tissue without CC/MCC	0.8176
562,MDC 08M,Fracture, Sprain, Strain and Dislocation Except Femur, Hip, Pelvis and Thigh with MCC	1.4635
563,MDC 08M,Fracture, Sprain, Strain and Dislocation Except Femur, Hip, Pelvis and Thigh without MCC	0.8938
564,MDC 08M,Other Musculoskeletal System and Connective Tissue Diagnoses with MCC	1.5692
565,MDC 08M,Other Musculoskeletal System and Connective Tissue Diagnoses with CC	1.0197
566,MDC 08M,Other Musculoskeletal System and Connective Tissue Diagnoses without CC/MCC	0.7481
570,MDC 09P,Skin Debridement with MCC	3.0102
571,MDC 09P,Skin Debridement with CC	1.6743
572,MDC 09P,Skin Debridement without CC/MCC	1.1424
573,MDC 09P,Skin Graft for Skin Ulcer or Cellulitis with MCC	6.1582
574,MDC 09P,Skin Graft for Skin Ulcer or Cellulitis with CC	3.4649
575,MDC 09P,Skin Graft for Skin Ulcer or Cellulitis without CC/MCC	1.9967
576,MDC 09P,Skin Graft Except for Skin Ulcer or Cellulitis with MCC	5.3953
577,MDC 09P,Skin Graft Except for Skin Ulcer or Cellulitis with CC	2.6628

<b>DRG, MDC, and DRG description</b>	<b>DRG cost weight</b>
578,MDC 09P,Skin Graft Except for Skin Ulcer or Cellulitis without CC/MCC	1.6904
579,MDC 09P,Other Skin, Subcutaneous Tissue and Breast Procedures with MCC	3.2594
580,MDC 09P,Other Skin, Subcutaneous Tissue and Breast Procedures with CC	1.7730
581,MDC 09P,Other Skin, Subcutaneous Tissue and Breast Procedures without CC/MCC	1.4392
582,MDC 09P,Mastectomy for Malignancy with CC/MCC	1.7512
583,MDC 09P,Mastectomy for Malignancy without CC/MCC	1.6427
584,MDC 09P,Breast Biopsy, Local Excision and Other Breast Procedures with CC/MCC	2.0474
585,MDC 09P,Breast Biopsy, Local Excision and Other Breast Procedures without CC/MCC	1.9851
592,MDC 09M,Skin Ulcers with MCC	2.0563
593,MDC 09M,Skin Ulcers with CC	1.2227
594,MDC 09M,Skin Ulcers without CC/MCC	0.8487
595,MDC 09M,Major Skin Disorders with MCC	2.1151
596,MDC 09M,Major Skin Disorders without MCC	1.0811
597,MDC 09M,Malignant Breast Disorders with MCC	1.7567
598,MDC 09M,Malignant Breast Disorders with CC	1.0789
599,MDC 09M,Malignant Breast Disorders without CC/MCC	0.8549
600,MDC 09M,Non-Malignant Breast Disorders with CC/MCC	0.9566
601,MDC 09M,Non-Malignant Breast Disorders without CC/MCC	0.5995
602,MDC 09M,Cellulitis with MCC	1.4692
603,MDC 09M,Cellulitis without MCC	0.8808
604,MDC 09M,Trauma to the Skin, Subcutaneous Tissue and Breast with MCC	1.4857
605,MDC 09M,Trauma to the Skin, Subcutaneous Tissue and Breast without MCC	0.9237
606,MDC 09M,Minor Skin Disorders with MCC	1.6103
607,MDC 09M,Minor Skin Disorders without MCC	0.8642
614,MDC 10P,Adrenal and Pituitary Procedures with CC/MCC	2.2790

<b>DRG, MDC, and DRG description</b>	<b>DRG cost weight</b>
615,MDC 10P,Adrenal and Pituitary Procedures without CC/MCC	1.4330
616,MDC 10P,Amputation of Lower Limb for Endocrine, Nutritional and Metabolic Disorders with MCC	3.8650
617,MDC 10P,Amputation of Lower Limb for Endocrine, Nutritional and Metabolic Disorders with CC	1.9316
618,MDC 10P,Amputation of Lower Limb for Endocrine, Nutritional and Metabolic Disorders without CC/MCC	1.2451
619,MDC 10P,O.R. Procedures for Obesity with MCC	2.7265
620,MDC 10P,O.R. Procedures for Obesity with CC	1.5970
621,MDC 10P,O.R. Procedures for Obesity without CC/MCC	1.4618
622,MDC 10P,Skin Grafts and Wound Debridement for Endocrine, Nutritional and Metabolic Disorders with MCC	3.7420
623,MDC 10P,Skin Grafts and Wound Debridement for Endocrine, Nutritional and Metabolic Disorders with CC	1.9128
624,MDC 10P,Skin Grafts and Wound Debridement for Endocrine, Nutritional and Metabolic Disorders without CC/MCC	1.0031
625,MDC 10P,Thyroid, Parathyroid and Thyroglossal Procedures with MCC	2.8671
626,MDC 10P,Thyroid, Parathyroid and Thyroglossal Procedures with CC	1.5093
627,MDC 10P,Thyroid, Parathyroid and Thyroglossal Procedures without CC/MCC	1.2669
628,MDC 10P,Other Endocrine, Nutritional and Metabolic O.R. Procedures with MCC	3.9457
629,MDC 10P,Other Endocrine, Nutritional and Metabolic O.R. Procedures with CC	2.2491
630,MDC 10P,Other Endocrine, Nutritional and Metabolic O.R. Procedures without CC/MCC	1.4013
637,MDC 10M,Diabetes with MCC	1.4563
638,MDC 10M,Diabetes with CC	0.9172
639,MDC 10M,Diabetes without CC/MCC	0.6266
640,MDC 10M,Miscellaneous Disorders of Nutrition, Metabolism, Fluids and Electrolytes with MCC	1.3280
641,MDC 10M,Miscellaneous Disorders of Nutrition, Metabolism, Fluids and Electrolytes without MCC	0.7814

<b>DRG, MDC, and DRG description</b>	<b>DRG cost weight</b>
642,MDC 10M,Inborn and Other Disorders of Metabolism	1.2411
643,MDC 10M,Endocrine Disorders with MCC	1.6573
644,MDC 10M,Endocrine Disorders with CC	1.0334
645,MDC 10M,Endocrine Disorders without CC/MCC	0.7787
650,MDC 11P,Kidney Transplant with Hemodialysis with MCC	4.6073
651,MDC 11P,Kidney Transplant with Hemodialysis without MCC	3.4725
652,MDC 11P,Kidney Transplant	3.0714
653,MDC 11P,Major Bladder Procedures with MCC	5.5746
654,MDC 11P,Major Bladder Procedures with CC	2.8221
655,MDC 11P,Major Bladder Procedures without CC/MCC	2.0773
656,MDC 11P,Kidney and Ureter Procedures for Neoplasm with MCC	3.2580
657,MDC 11P,Kidney and Ureter Procedures for Neoplasm with CC	1.8281
658,MDC 11P,Kidney and Ureter Procedures for Neoplasm without CC/MCC	1.5040
659,MDC 11P,Kidney and Ureter Procedures for Non-Neoplasm with MCC	2.5843
660,MDC 11P,Kidney and Ureter Procedures for Non-Neoplasm with CC	1.3400
661,MDC 11P,Kidney and Ureter Procedures for Non-Neoplasm without CC/MCC	1.0266
662,MDC 11P,Minor Bladder Procedures with MCC	3.1196
663,MDC 11P,Minor Bladder Procedures with CC	1.5274
664,MDC 11P,Minor Bladder Procedures without CC/MCC	1.0798
665,MDC 11P,Prostatectomy with MCC	3.4336
666,MDC 11P,Prostatectomy with CC	1.6473
667,MDC 11P,Prostatectomy without CC/MCC	1.0278
668,MDC 11P,Transurethral Procedures with MCC	2.9163
669,MDC 11P,Transurethral Procedures with CC	1.5475
670,MDC 11P,Transurethral Procedures without CC/MCC	0.9557
671,MDC 11P,Urethral Procedures with CC/MCC	1.7237
672,MDC 11P,Urethral Procedures without CC/MCC	1.0944
673,MDC 11P,Other Kidney and Urinary Tract Procedures with MCC	4.1896

<b>DRG, MDC, and DRG description</b>	<b>DRG cost weight</b>
674,MDC 11P,Other Kidney and Urinary Tract Procedures with CC	2.3084
675,MDC 11P,Other Kidney and Urinary Tract Procedures without CC/MCC	1.5653
682,MDC 11M,Renal Failure with MCC	1.5019
683,MDC 11M,Renal Failure with CC	0.8889
684,MDC 11M,Renal Failure without CC/MCC	0.6074
686,MDC 11M,Kidney and Urinary Tract Neoplasms with MCC	1.8857
687,MDC 11M,Kidney and Urinary Tract Neoplasms with CC	1.0527
688,MDC 11M,Kidney and Urinary Tract Neoplasms without CC/MCC	0.7242
689,MDC 11M,Kidney and Urinary Tract Infections with MCC	1.1703
690,MDC 11M,Kidney and Urinary Tract Infections without MCC	0.8026
693,MDC 11M,Urinary Stones with MCC	1.4704
694,MDC 11M,Urinary Stones without MCC	0.7814
695,MDC 11M,Kidney and Urinary Tract Signs and Symptoms with MCC	1.1278
696,MDC 11M,Kidney and Urinary Tract Signs and Symptoms without MCC	0.6918
697,MDC 11M,Urethral Stricture	1.0018
698,MDC 11M,Other Kidney and Urinary Tract Diagnoses with MCC	1.6809
699,MDC 11M,Other Kidney and Urinary Tract Diagnoses with CC	1.0199
700,MDC 11M,Other Kidney and Urinary Tract Diagnoses without CC/MCC	0.6942
707,MDC 12P,Major Male Pelvic Procedures with CC/MCC	1.9406
708,MDC 12P,Major Male Pelvic Procedures without CC/MCC	1.4825
709,MDC 12P,Penis Procedures with CC/MCC	2.2471
710,MDC 12P,Penis Procedures without CC/MCC	1.5014
711,MDC 12P,Testes Procedures with CC/MCC	1.9106
712,MDC 12P,Testes Procedures without CC/MCC	1.0696
713,MDC 12P,Transurethral Prostatectomy with CC/MCC	1.4460
714,MDC 12P,Transurethral Prostatectomy without CC/MCC	0.9397
715,MDC 12P,Other Male Reproductive System O.R. Procedures for Malignancy with CC/MCC	2.2583

<b>DRG, MDC, and DRG description</b>	<b>DRG cost weight</b>
716,MDC 12P,Other Male Reproductive System O.R. Procedures for Malignancy without CC/MCC	1.4193
717,MDC 12P,Other Male Reproductive System O.R. Procedures Except Malignancy with CC/MCC	1.8555
718,MDC 12P,Other Male Reproductive System O.R. Procedures Except Malignancy without CC/MCC	1.2319
722,MDC 12M,Malignancy, Male Reproductive System with MCC	1.7289
723,MDC 12M,Malignancy, Male Reproductive System with CC	1.1229
724,MDC 12M,Malignancy, Male Reproductive System without CC/MCC	0.7286
725,MDC 12M,Benign Prostatic Hypertrophy with MCC	1.2626
726,MDC 12M,Benign Prostatic Hypertrophy without MCC	0.7444
727,MDC 12M,Inflammation of the Male Reproductive System with MCC	1.4694
728,MDC 12M,Inflammation of the Male Reproductive System without MCC	0.8171
729,MDC 12M,Other Male Reproductive System Diagnoses with CC/MCC	1.1009
730,MDC 12M,Other Male Reproductive System Diagnoses without CC/MCC	0.6069
734,MDC 13P,Pelvic Evisceration, Radical Hysterectomy and Radical Vulvectomy with CC/MCC	2.1028
735,MDC 13P,Pelvic Evisceration, Radical Hysterectomy and Radical Vulvectomy without CC/MCC	1.2139
736,MDC 13P,Uterine and Adnexa Procedures for Ovarian or Adnexal Malignancy with MCC	3.9376
737,MDC 13P,Uterine and Adnexa Procedures for Ovarian or Adnexal Malignancy with CC	1.9984
738,MDC 13P,Uterine and Adnexa Procedures for Ovarian or Adnexal Malignancy without CC/MCC	1.5169
739,MDC 13P,Uterine and Adnexa Procedures for Non-Ovarian and Non-Adnexal Malignancy with MCC	3.9809
740,MDC 13P,Uterine and Adnexa Procedures for Non-Ovarian and Non-Adnexal Malignancy with CC	1.8183
741,MDC 13P,Uterine and Adnexa Procedures for Non-Ovarian and Non-Adnexal Malignancy without CC/MCC	1.3736
742,MDC 13P,Uterine and Adnexa Procedures for Non-Malignancy with CC/MCC	1.8267

<b>DRG, MDC, and DRG description</b>	<b>DRG cost weight</b>
743,MDC 13P,Uterine and Adnexa Procedures for Non-Malignancy without CC/MCC	1.1987
744,MDC 13P,D&C, Conization, Laparoscopy and Tubal Interruption with CC/MCC	1.9540
745,MDC 13P,D&C, Conization, Laparoscopy and Tubal Interruption without CC/MCC	1.0248
746,MDC 13P,Vagina, Cervix and Vulva Procedures with CC/MCC	1.6746
747,MDC 13P,Vagina, Cervix and Vulva Procedures without CC/MCC	0.9552
748,MDC 13P,Female Reproductive System Reconstructive Procedures	1.3623
749,MDC 13P,Other Female Reproductive System O.R. Procedures with CC/MCC	2.5886
750,MDC 13P,Other Female Reproductive System O.R. Procedures without CC/MCC	1.2895
754,MDC 13M,Malignancy, Female Reproductive System with MCC	1.8093
755,MDC 13M,Malignancy, Female Reproductive System with CC	1.1101
756,MDC 13M,Malignancy, Female Reproductive System without CC/MCC	0.9550
757,MDC 13M,Infections, Female Reproductive System with MCC	1.4153
758,MDC 13M,Infections, Female Reproductive System with CC	1.0193
759,MDC 13M,Infections, Female Reproductive System without CC/MCC	0.6400
760,MDC 13M,Menstrual and Other Female Reproductive System Disorders with CC/MCC	0.9856
761,MDC 13M,Menstrual and Other Female Reproductive System Disorders without CC/MCC	0.6339
768,MDC 14P,Vaginal Delivery with O.R. Procedures Except Sterilization and/or D&C	1.0963
769,MDC 14P,Postpartum and Post Abortion Diagnoses with O.R. Procedures	1.3895
770,MDC 14P,Abortion with D&C, Aspiration Curettage or Hysterotomy	1.0760
776,MDC 14M,Postpartum and Post Abortion Diagnoses without O.R. Procedures	0.7135
779,MDC 14M,Abortion without D&C	0.9348
783,MDC 14P,Cesarean Section with Sterilization with MCC	1.8421
784,MDC 14P,Cesarean Section with Sterilization with CC	1.0830

<b>DRG, MDC, and DRG description</b>	<b>DRG cost weight</b>
785,MDC 14P,Cesarean Section with Sterilization without CC/MCC	0.8735
786,MDC 14P,Cesarean Section without Sterilization with MCC	1.6159
787,MDC 14P,Cesarean Section without Sterilization with CC	1.0618
788,MDC 14P,Cesarean Section without Sterilization without CC/MCC	0.9047
789,MDC 15M,Neonates, Died or Transferred to Another Acute Care Facility	1.8026
790,MDC 15M,Extreme Immaturity or Respiratory Distress Syndrome, Neonate	5.9448
791,MDC 15M,Prematurity with Major Problems	4.0599
792,MDC 15M,Prematurity without Major Problems	2.4497
793,MDC 15M,Full Term Neonate with Major Problems	4.1705
794,MDC 15M,Neonate with Other Significant Problems	1.4762
795,MDC 15M,Normal Newborn	0.1998
796,MDC 14P,Vaginal Delivery with Sterilization and/or D&C with MCC	1.2766
797,MDC 14P,Vaginal Delivery with Sterilization and/or D&C with CC	0.9682
798,MDC 14P,Vaginal Delivery with Sterilization and/or D&C without CC/MCC	0.9682
799,MDC 16P,Splenic Procedures with MCC	4.7548
800,MDC 16P,Splenic Procedures with CC	2.9138
801,MDC 16P,Splenic Procedures without CC/MCC	1.6417
802,MDC 16P,Other O.R. Procedures of the Blood and Blood Forming Organs with MCC	3.5848
803,MDC 16P,Other O.R. Procedures of the Blood and Blood Forming Organs with CC	1.7800
804,MDC 16P,Other O.R. Procedures of the Blood and Blood Forming Organs without CC/MCC	1.1056
805,MDC 14M,Vaginal Delivery without Sterilization or D&C with MCC	0.9980
806,MDC 14M,Vaginal Delivery without Sterilization or D&C with CC	0.7236
807,MDC 14M,Vaginal Delivery without Sterilization or D&C without CC/MCC	0.6373
808,MDC 16M,Major Hematological and Immunological Diagnoses Except Sick Cell Crisis and Coagulation Disorders with MCC	2.2903

<b>DRG, MDC, and DRG description</b>	<b>DRG cost weight</b>
809,MDC 16M,Major Hematological and Immunological Diagnoses Except Sickle Cell Crisis and Coagulation Disorders with CC	1.2385
810,MDC 16M,Major Hematological and Immunological Diagnoses Except Sickle Cell Crisis and Coagulation Disorders without CC/MCC	0.9518
811,MDC 16M,Red Blood Cell Disorders with MCC	1.4069
812,MDC 16M,Red Blood Cell Disorders without MCC	0.9229
813,MDC 16M,Coagulation Disorders	1.5480
814,MDC 16M,Reticuloendothelial and Immunity Disorders with MCC	2.0905
815,MDC 16M,Reticuloendothelial and Immunity Disorders with CC	1.0161
816,MDC 16M,Reticuloendothelial and Immunity Disorders without CC/MCC	0.6594
817,MDC 14P,Other Antepartum Diagnoses with O.R. Procedures with MCC	2.5351
818,MDC 14P,Other Antepartum Diagnoses with O.R. Procedures with CC	1.2880
819,MDC 14P,Other Antepartum Diagnoses with O.R. Procedures without CC/MCC	0.8165
820,MDC 17P,Lymphoma and Leukemia with Major O.R. Procedures with MCC	5.8223
821,MDC 17P,Lymphoma and Leukemia with Major O.R. Procedures with CC	2.2324
822,MDC 17P,Lymphoma and Leukemia with Major O.R. Procedures without CC/MCC	1.1437
823,MDC 17P,Lymphoma and Non-Acute Leukemia with Other Procedures with MCC	4.6795
824,MDC 17P,Lymphoma and Non-Acute Leukemia with Other Procedures with CC	2.1994
825,MDC 17P,Lymphoma and Non-Acute Leukemia with Other Procedures without CC/MCC	1.2308
826,MDC 17P,Myeloproliferative Disorders or Poorly Differentiated Neoplasms with Major O.R. Procedures with MCC	4.7755
827,MDC 17P,Myeloproliferative Disorders or Poorly Differentiated Neoplasms with Major O.R. Procedures with CC	2.3599
828,MDC 17P,Myeloproliferative Disorders or Poorly Differentiated Neoplasms with Major O.R. Procedures without CC/MCC	1.6029

<b>DRG, MDC, and DRG description</b>	<b>DRG cost weight</b>
829,MDC 17P,Myeloproliferative Disorders or Poorly Differentiated Neoplasms with Other Procedures with CC/MCC	3.0838
830,MDC 17P,Myeloproliferative Disorders or Poorly Differentiated Neoplasms with Other Procedures without CC/MCC	1.4625
831,MDC 14M,Other Antepartum Diagnoses without O.R. Procedures with MCC	1.1510
832,MDC 14M,Other Antepartum Diagnoses without O.R. Procedures with CC	0.7474
833,MDC 14M,Other Antepartum Diagnoses without O.R. Procedures without CC/MCC	0.5198
834,MDC 17M,Acute Leukemia with MCC	5.5273
835,MDC 17M,Acute Leukemia with CC	2.1359
836,MDC 17M,Acute Leukemia without CC/MCC	1.2707
837,MDC 17M,Chemotherapy with Acute Leukemia as Secondary Diagnosis or with High Dose Chemotherapy Agent with MCC	5.0072
838,MDC 17M,Chemotherapy with Acute Leukemia as Secondary Diagnosis with CC or High Dose Chemotherapy Agent	2.0282
839,MDC 17M,Chemotherapy with Acute Leukemia as Secondary Diagnosis without CC/MCC	1.3704
840,MDC 17M,Lymphoma and Non-Acute Leukemia with MCC	3.1890
841,MDC 17M,Lymphoma and Non-Acute Leukemia with CC	1.5680
842,MDC 17M,Lymphoma and Non-Acute Leukemia without CC/MCC	1.0519
843,MDC 17M,Other Myeloproliferative Disorders or Poorly Differentiated Neoplastic Diagnoses with MCC	1.8933
844,MDC 17M,Other Myeloproliferative Disorders or Poorly Differentiated Neoplastic Diagnoses with CC	1.1952
845,MDC 17M,Other Myeloproliferative Disorders or Poorly Differentiated Neoplastic Diagnoses without CC/MCC	0.8368
846,MDC 17M,Chemotherapy without Acute Leukemia as Secondary Diagnosis with MCC	2.5538
847,MDC 17M,Chemotherapy without Acute Leukemia as Secondary Diagnosis with CC	1.2707
848,MDC 17M,Chemotherapy without Acute Leukemia as Secondary Diagnosis without CC/MCC	0.8189
849,MDC 17M,Radiotherapy	2.6711

<b>DRG, MDC, and DRG description</b>	<b>DRG cost weight</b>
850,MDC 17P,Acute Leukemia with Other Procedures	9.2119
853,MDC 18P,Infectious and Parasitic Diseases with O.R. Procedures with MCC	5.0013
854,MDC 18P,Infectious and Parasitic Diseases with O.R. Procedures with CC	1.9981
855,MDC 18P,Infectious and Parasitic Diseases with O.R. Procedures without CC/MCC	1.6256
856,MDC 18P,Postoperative or Post-Traumatic Infections with O.R. Procedures with MCC	4.5116
857,MDC 18P,Postoperative or Post-Traumatic Infections with O.R. Procedures with CC	2.1789
858,MDC 18P,Postoperative or Post-Traumatic Infections with O.R. Procedures without CC/MCC	1.2884
862,MDC 18M,Postoperative and Post-Traumatic Infections with MCC	1.8387
863,MDC 18M,Postoperative and Post-Traumatic Infections without MCC	0.9999
864,MDC 18M,Fever and Inflammatory Conditions	0.8980
865,MDC 18M,Viral Illness with MCC	1.4759
866,MDC 18M,Viral Illness without MCC	0.8848
867,MDC 18M,Other Infectious and Parasitic Diseases Diagnoses with MCC	2.1443
868,MDC 18M,Other Infectious and Parasitic Diseases Diagnoses with CC	1.0501
869,MDC 18M,Other Infectious and Parasitic Diseases Diagnoses without CC/MCC	0.7196
870,MDC 18M,Septicemia or Severe Sepsis with MV >96 Hours	6.9565
871,MDC 18M,Septicemia or Severe Sepsis without MV >96 Hours with MCC	1.9621
872,MDC 18M,Septicemia or Severe Sepsis without MV >96 Hours without MCC	1.0310
876,MDC 19P,O.R. Procedures with Principal Diagnosis of Mental Illness	3.9296
880,MDC 19M,Acute Adjustment Reaction and Psychosocial Dysfunction	0.9586
881,MDC 19M,Depressive Neuroses	0.9141
882,MDC 19M,Neuroses Except Depressive	0.9620
883,MDC 19M,Disorders of Personality and Impulse Control	1.8539

<b>DRG, MDC, and DRG description</b>	<b>DRG cost weight</b>
884,MDC 19M,Organic Disturbances and Intellectual Disability	1.6702
885,MDC 19M,Psychoses	1.4096
886,MDC 19M,Behavioral and Developmental Disorders	1.7965
887,MDC 19M,Other Mental Disorder Diagnoses	1.1894
894,MDC 20M,Alcohol, Drug Abuse or Dependence, Left AMA	0.6241
895,MDC 20M,Alcohol, Drug Abuse or Dependence with Rehabilitation Therapy	1.4479
896,MDC 20M,Alcohol, Drug Abuse or Dependence without Rehabilitation Therapy with MCC	1.7808
897,MDC 20M,Alcohol, Drug Abuse or Dependence without Rehabilitation Therapy without MCC	0.8822
901,MDC 21P,Wound Debridements for Injuries with MCC	4.4305
902,MDC 21P,Wound Debridements for Injuries with CC	1.8976
903,MDC 21P,Wound Debridements for Injuries without CC/MCC	1.2191
904,MDC 21P,Skin Grafts for Injuries with CC/MCC	3.8611
905,MDC 21P,Skin Grafts for Injuries without CC/MCC	1.6482
906,MDC 21P,Hand Procedures for Injuries	2.1825
907,MDC 21P,Other O.R. Procedures for Injuries with MCC	3.9837
908,MDC 21P,Other O.R. Procedures for Injuries with CC	2.0171
909,MDC 21P,Other O.R. Procedures for Injuries without CC/MCC	1.2683
913,MDC 21M,Traumatic Injury with MCC	1.6183
914,MDC 21M,Traumatic Injury without MCC	0.9164
915,MDC 21M,Allergic Reactions with MCC	1.7379
916,MDC 21M,Allergic Reactions without MCC	0.6641
917,MDC 21M,Poisoning and Toxic Effects of Drugs with MCC	1.6397
918,MDC 21M,Poisoning and Toxic Effects of Drugs without MCC	0.8846
919,MDC 21M,Complications of Treatment with MCC	1.8236
920,MDC 21M,Complications of Treatment with CC	1.0159
921,MDC 21M,Complications of Treatment without CC/MCC	0.6877
922,MDC 21M,Other Injury, Poisoning and Toxic Effect Diagnoses with MCC	1.6894

<b>DRG, MDC, and DRG description</b>	<b>DRG cost weight</b>
923,MDC 21M,Other Injury, Poisoning and Toxic Effect Diagnoses without MCC	1.0199
927,MDC 22P,Extensive Burns or Full Thickness Burns with MV >96 Hours with Skin Graft	23.7228
928,MDC 22P,Full Thickness Burn with Skin Graft or Inhalation Injury with CC/MCC	6.6789
929,MDC 22P,Full Thickness Burn with Skin Graft or Inhalation Injury without CC/MCC	3.1804
933,MDC 22M,Extensive Burns or Full Thickness Burns with MV >96 Hours without Skin Graft	4.3269
934,MDC 22M,Full Thickness Burn without Skin Graft or Inhalation Injury	2.1458
935,MDC 22M,Non-Extensive Burns	2.1964
939,MDC 23P,O.R. Procedures with Diagnoses of Other Contact with Health Services with MCC	3.1740
940,MDC 23P,O.R. Procedures with Diagnoses of Other Contact with Health Services with CC	2.1114
941,MDC 23P,O.R. Procedures with Diagnoses of Other Contact with Health Services without CC/MCC	1.9543
945,MDC 23M,Rehabilitation with CC/MCC	1.5265
946,MDC 23M,Rehabilitation without CC/MCC	1.1165
947,MDC 23M,Signs and Symptoms with MCC	1.2862
948,MDC 23M,Signs and Symptoms without MCC	0.7945
949,MDC 23M,Aftercare with CC/MCC	1.0790
950,MDC 23M,Aftercare without CC/MCC	0.5861
951,MDC 23M,Other Factors Influencing Health Status	0.5670
955,MDC 24P,Craniotomy for Multiple Significant Trauma	6.8283
956,MDC 24P,Limb Reattachment, Hip and Femur Procedures for Multiple Significant Trauma	3.8224
957,MDC 24P,Other O.R. Procedures for Multiple Significant Trauma with MCC	7.4642
958,MDC 24P,Other O.R. Procedures for Multiple Significant Trauma with CC	4.1098
959,MDC 24P,Other O.R. Procedures for Multiple Significant Trauma without CC/MCC	2.6439

<b>DRG, MDC, and DRG description</b>	<b>DRG cost weight</b>
963,MDC 24M,Other Multiple Significant Trauma with MCC	2.7167
964,MDC 24M,Other Multiple Significant Trauma with CC	1.5001
965,MDC 24M,Other Multiple Significant Trauma without CC/MCC	0.9126
969,MDC 25P,HIV with Extensive O.R. Procedures with MCC	6.3243
970,MDC 25P,HIV with Extensive O.R. Procedures without MCC	2.6533
974,MDC 25M,HIV with Major Related Condition with MCC	2.9862
975,MDC 25M,HIV with Major Related Condition with CC	1.4214
976,MDC 25M,HIV with Major Related Condition without CC/MCC	1.0030
977,MDC 25M,HIV with or without Other Related Condition	1.4419
981,MDC P,Extensive O.R. Procedures Unrelated to Principal Diagnosis with MCC	4.7539
982,MDC P,Extensive O.R. Procedures Unrelated to Principal Diagnosis with CC	2.4483
983,MDC P,Extensive O.R. Procedures Unrelated to Principal Diagnosis without CC/MCC	1.6682
987,MDC P,Non-Extensive O.R. Procedures Unrelated to Principal Diagnosis with MCC	3.5027
988,MDC P,Non-Extensive O.R. Procedures Unrelated to Principal Diagnosis with CC	1.7160
989,MDC P,Non-Extensive O.R. Procedures Unrelated to Principal Diagnosis without CC/MCC	1.1555
998,MDC ,Principal Diagnosis Invalid as Discharge Diagnosis	0.0000
999,MDC ,Ungroupable	0.0000



# Index

## A

accelerator keys	
data entry window.....	25
interactive output.....	34

## B

batch processing	
command line examples.....	48
output files and formats.....	49
printing output.....	63
processing options.....	47
viewing output.....	62
buttons	
output report.....	35

## C

command buttons	
interactive output.....	35
command line	
examples.....	48
processing options.....	47
copy text.....	25, 34
cut text.....	25

## D

data entry fields.....	18
data entry window	
accelerator keys.....	25
display new window.....	25
error messages.....	26
fields.....	18
patient information.....	18
patient stay information.....	19
menu options.....	25
data processing	
batch.....	39
interactive.....	15
date format.....	18, 19
default primary payer value.....	19
delete text.....	25
discharge status values.....	19

## E

edit	
invalid age.....	38
invalid discharge status.....	38
invalid sex.....	38
edits	
description.....	35
error messages	
batch processing.....	63
interactive.....	26
example	
batch processing commands.....	48
interactive output report.....	30
exit the program.....	25

## F

fields	
interactive	
data entry.....	18
file	
batch output.....	49
interactive output.....	34

## G

grouper selection.....	15
------------------------	----

## I

interactive data processing.....	15
interactive output report	
accelerator keys.....	34
command buttons.....	35
edits.....	35
example.....	30
menu options.....	34
saving.....	34
invalid age.....	38
invalid discharge status.....	38
invalid sex.....	38

## K

keys, accelerator	
data entry window.....	25
output report.....	34

**L**

- list
  - MDCs..... 73
- log files
  - printing ..... 67
  - renaming..... 67
  - viewing..... 67

**M**

- MDCs, list of ..... 73
- menu options
  - data entry window..... 25
  - interactive output..... 34

**O**

- options in batch processing ..... 47
- output files ..... 49
- output report
  - batch processing..... 49
  - closing the report window..... 35
  - example ..... 30
  - exiting ..... 30
  - interactive
    - accelerator keys ..... 34
    - command buttons ..... 35
    - edits..... 35
    - menu options ..... 34
  - printing ..... 34, 63

**P**

- paste text ..... 25
- primary payer values..... 19
- print
  - log file ..... 67
  - output report..... 34, 63
- processing options in batch processing .... 47
- product description..... 9
- program output
  - batch processing..... 49

**R**

- renaming
  - log files..... 67

**S**

- save ..... 34
- sex conflict ..... 38

**V**

- versions of the software ..... 9
- view
  - batch output ..... 62
  - log file ..... 67