



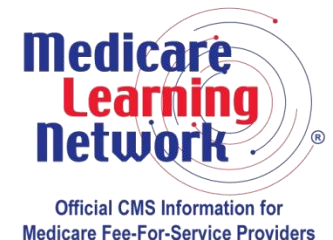
Begin Transitioning to ICD-10 in 2013

National Provider Call

April 18, 2013

This National Provider Call is brought to you by the Medicare Learning Network® (MLN)*, the source of official CMS information for Medicare Fee-For-Service Providers.

*The Medicare Learning Network® (MLN), a registered trademark of CMS, is the brand name for official CMS educational products and information for Medicare Fee-For-Service Providers. For additional information, visit MLN's web page at <http://www.cms.gov/MLNGenInfo> on the CMS website.



Disclaimers

This presentation was current at the time it was published or uploaded onto the web. Medicare policy changes frequently so links to the source documents have been provided within the document for your reference.

This presentation was prepared as a service to the public and is not intended to grant rights or impose obligations. This presentation may contain references or links to statutes, regulations, or other policy materials. The information provided is only intended to be a general summary. It is not intended to take the place of either the written law or regulations. We encourage readers to review the specific statutes, regulations, and other interpretive materials for a full and accurate statement of their contents.

CPT Disclaimer -- American Medical Association (AMA) Notice

CPT only copyright 2012 American Medical Association. All rights reserved. CPT is a registered trademark of the American Medical Association. Applicable FARS\DFARS Restrictions Apply to Government Use. Fee schedules, relative value units, conversion factors and/or related components are not assigned by the AMA, are not part of CPT, and the AMA is not recommending their use. The AMA does not directly or indirectly practice medicine or dispense medical services. The AMA assumes no liability for data contained or not contained herein.

Agenda

- Updates on ICD-10 Codes and ICD-10 MS-DRGs
Pat Brooks, CMS
- Medicare FFS Claims Processing, Billing, and Reporting Guidelines for ICD-10
Sarah Shirey-Losso, CMS
- Update on National Coverage Determinations and ICD-10
Janet Anderson Brock, CMS
- ICD-10 Implementation
Denesecia Green, CMS
- Question and Answer Session

Updates on ICD-10 Codes and ICD-10 MS-DRGs



Pat Brooks, RHIA
Senior Technical Advisor
Hospital and Ambulatory Policy Group
Center for Medicare
CMS

- Information on ICD-9-CM updates available on the [ICD-9-CM](#) website
- Information on ICD-10 updates available on the [ICD-10](#) website
- Information on the [Partial Code Freeze](#)

- Public forum on ICD-9-CM and ICD-10 code updates
- March 5, 2013 Coordination and Maintenance (C&M) Committee meeting was webcast
- Handouts and webcast available on the [March 5 C&M](#) web page

- Medicare Severity Diagnosis Related Group (MS-DRG) V30.0 ICD-10 Definitions Manual
- ICD-10 definitions of Medicare code edits
- Available in text and HTML versions on the [ICD-10](#) website
- Final FY 2015 ICD-10 MS-DRGs V32.0 subject to formal rulemaking

- ICD-10 MS-DRGs
 - MS-DRG V30 ICD-10 mainframe software
 - MCE V30 ICD-10 mainframe software
 - MSG/MCE V30 ICD-10 PC software
- Available through the [National Technical Information Service](#) (NTIS)
- Link on [CMS](#) website under “Related Links”

- [MLN Matters® Special Edition Article #SE1239](#) – “Updated ICD-10 Implementation Information”
- [MLN Matters® Special Edition Article #SE1240](#) – “Partial Code Freeze Prior to ICD-10 Implementation”

- The CMS [ICD-10](#) website provides the latest ICD-10 information and links to resources for providers to prepare for ICD-10 implementation
 - Sign up for [CMS ICD-10 Industry Email Updates](#)
- The [CMS Sponsored ICD-10 Teleconferences](#) web page provides information on upcoming and previous CMS ICD-10 National Provider Calls, including registration, presentation materials, video slideshow presentations, written transcripts and audio recordings

- [Medicare Fee-for-Service Provider Resources](#) web page and
- [Provider Resources](#) (for all providers) web page provide links to a variety of related educational resources and information

- The following organizations offer other ICD-10 resources
 - [WEDI](#) (Workgroup for Electronic Data Interchange) website
 - [HIMSS](#) (Health Information and Management Systems Society) website

Medicare FFS Claims Processing, Billing, and Reporting Guidelines for ICD-10



Sarah Shirey-Losso, Hospital Team Lead
Provider Billing Group
Center for Medicare
CMS

- [MLN Matters Article 7492](#) – “Medicare Fee-For-Service (FFS) Claims Processing Guidance for Implementing ICD-10”
 - Reporting ICD-10 diagnosis codes
 - Claims Submissions of diagnosis codes
 - Date Span Requirements

- ICD-9 codes no longer accepted on claims **after** October 1, 2014
- ICD-10 codes will not be recognized/accepted on claims **before** October 1, 2014
- Claims cannot contain **both** ICD-9 codes and ICD-10 codes
- Institutional Claims – Return to Provider (RTP)
- Professional/Supplier Claims—Return as Unprocessable

- Outpatient claims - **split** claim and Use **from** date
- Inpatient claims – Use **only through** date/**discharge** date – use ICD-10 codes

Update on National Coverage Determinations and ICD-10



Janet Anderson Brock, Director
Division of Operations and Information Management
Coverage and Analysis Group
Center for Clinical Standards and Quality
CMS

Local Coverage Determinations

- Local coverage determinations (LCDs) are those decisions made by the individual MAC
- These determinations are usually jurisdictionally based
- Each individual MAC will be responsible for converting the ICD-9 codes to ICD-10 codes in their LCDs

National Coverage Determinations

- National Coverage Determinations (NCDs) are those decisions made by CMS and applied by each MAC at a national level
 - CMS will be responsible for converting the ICD-9 codes to ICD-10 codes in selected NCDs
 - There are approximately 330 NCDs, spanning a range of vintages
 - Not all NCDs are appropriate for translation
 - Non-coverage NCDs that employ edits based on HCPCS
 - Older NCDs on obsolete technology or are generally considered outdated
 - CMS has determined which NCDs should be translated, and CMS is in the process of completing the systems changes for those NCDs

National Coverage Determinations

- CMS transmittals and MLN Matters® Articles are the vehicle used to communicate information regarding NCD translations
 - [MLN Matters® Article #MM7818](#), “International Classification of Diseases, 10th Edition (ICD)-10 Conversion from (ICD-9) and Related Code Infrastructure of the Medicare Shared Systems as They Relate to CMS National Coverage Determinations (NCDs) (CR 1 of 3) (ICD-10)”
- Inquiries related to NCD translations can be sent to CAGinquiries@cms.hhs.gov
 - Please put ICD-10 in the subject line

Links Related to NCD ICD-10 Conversions (as of 2/22/2013)

Transmittal	Issue Date	Subject	CR#	Downloads
Coming soon	Coming soon	International Classification of Diseases (ICD)-10 Conversion from ICD-9 of the Medicare Shared Systems as They Relate to CMS National Coverage Determinations (NCDs) (CR 3 of 3) (ICD-10) -31 NCDs 20.16, 20.30, 20.31, 20.31.1, 20.31.2, 20.4, 20.7, 20.8, 40.1, 40.7, 50.3, 100.14, 110.4, 110.8.1, 150.10, 180.1, 190.1, 190.11, 190.3, 190.5, 190.8, 210.10, 210.2, 210.4, 210.4.1, 210.7, 220.4, 220.6.16, 220.6.19, 260.1, 260.9	8197	Pending release
R1174OTN	2/1/2013	Changes to the Laboratory National Coverage Determination (NCD) Software for ICD-10- 22 NCDs 190.12-190.34	8202	R1174OTN [PDF, 81KB] R1174OTN [ZIP, 641KB]
R2641CP	1/29/2013	Bariatric Surgery for the Treatment of Morbid Obesity National Coverage Determination, Addition of Laparoscopic Sleeve Gastrectomy (LSG)- NCD 100.1	8028	R2641CP [PDF, 186KB] MM8028 [PDF, 104KB]
R1165OTN	1/18/2013	International Classification of Diseases (ICD)-10 Conversion from ICD-9 and Related Code Infrastructure of the Medicare Shared Systems as They Relate to CMS National Coverage Determinations (NCDs) (CR 2 of 3)- 11 NCDs 20.16, 20.20, 20.29, 20.9, 90.1, 210.1, 210.3, 260.1, 260.3.1, 260.5, 270.1	8109	R1165OTN [PDF, 1MB] MM8109 [PDF, 106KB]
R2628CP and R147NCD	1/7/2013 and 9/24/2012	Transcatheter Aortic Valve Replacement (TAVR) Coding Update/Policy Clarification- NCD 20.32 and National Coverage Determination (NCD) for Transcatheter Aortic Valve Replacement (TAVR) -NCD 20.32	8168 and 7897	R2628CP [PDF, 99KB] MM8168 [PDF, 98KB] and R147NCD [PDF, 154KB] MM7897 [PDF, 135KB]

Links Related to NCD ICD-10 Conversions (continued)

Transmittal	Issue Date	Subject	CR#	Downloads
R2605CP	11/30/2012	Transcutaneous Electrical Nerve Stimulation (TENS) for Chronic Low Back Pain (CLBP)- NCD 160.27	7836	R149NCD [PDF, 102KB]
R2551CP and R143NCD	9/24/2012 and 5/18/2012	Extracorporeal Photopheresis (ICD-10) NCD 110.4 and Extracorporeal Photopheresis (ICD-10) NCD 110.4	7806	R2551CP [PDF, 163KB] MM7806 [PDF, 120KB] and R143NCD [PDF, 113KB] MM7806 [PDF, 120KB]
R1122OTN	9/14/2012	International Classification of Diseases (ICD)-10 Conversion from ICD-9 of the Medicare Shared Systems as They Relate to CMS National Coverage Determinations (NCDs) (CR 1 of 3) (ICD-10) 19 NCDs: 20.19, 20.5, 70.2.1, 80.11, 80.2, 80.2.1, 80.3, 80.3.1, 110.10, 110.21, 110.4, 150.3, 160.18, 160.24, 220.13, 230.9, 250.3, 250.4, 250.5	7818	R1122OTN [PDF, 72KB] R1122OTN1 [ZIP, 314KB] MM7818 [PDF, 101KB]
R2476CP	5/23/2012	Screening for Sexually Transmitted Infections (STIs) and High Intensity Behavioral Counseling (HIBC) to Prevent STIs (ICD-10)- NCD 210.10	7610	R2476CP [PDF, 469KB]
R2465CP	5/11/2012	Assigned Codes for Home Oxygen Use for Cluster Headache (CH) in a Clinical Trial (ICD-10) - NCD 240.2.2	7820	R2465CP [PDF, 116KB] MM7820 [PDF, 115KB]
R2421CP	3/7/2012	Intensive Behavioral Therapy for Obesity - NCD 210.12	7641	R2421CP [PDF, 295KB] MM7641 [PDF, 147KB]
R133NCD	7/8/2011	Autologous Cellular Immunotherapy Treatment of Metastatic Prostate Cancer- NCD 110.22	7431	R133NCD [PDF, 67KB] MM7431.pdf [PDF, 123KB]

ICD-10 Implementation



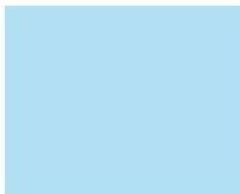
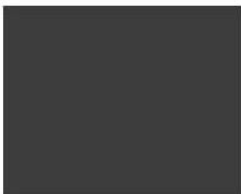
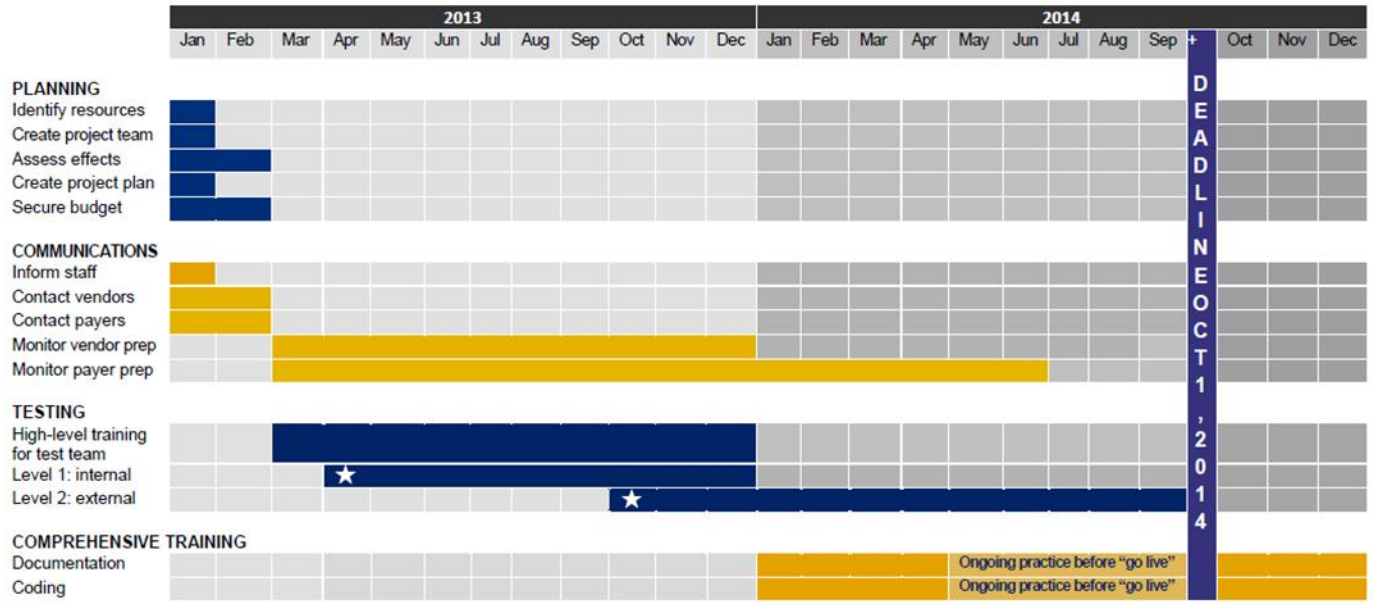
Denesecia Green, ICD-10 Program Lead
Administrative Simplification Group
Office of E-Health Standards and Services
CMS

- The compliance deadline for ICD-10-CM and PCS is **October 1, 2014**

ICD-10 Timeline for Providers



ICD-10 Timeline for Small-Medium Practices at a Glance



Best Practices: Health Condition Categories

- Affective Disorders
- Anxiety Disorders
- Attention Deficit Disorders
- Autism Spectrum Disorders
- Schizophrenia
- Substance Abuse
- Coronary Heart Disease
- Heart Failure
- Hypertension
- Myocardial Infection
- Cleft Lip/Palate
- Cerebral Palsy
- Diabetes Mellitus
- Hemophilia
- Leukemia
- AIDS/HIV
- Hepatitis
- Lung Cancer
- Brain Injury
- Chronic Dementia
- CVA
- Epilepsy
- Fetal Maturity/ Development
- High Risk Pregnancy
- Asthma
- COPD
- End-Stage Renal Disease
- Male related Conditions
- Female related Conditions
- Hip Fracture

- Defines 30 health conditions and code sets universally important to State Medicaid Agencies
- Informs ICD-10 transition business and operational requirements
- End users: Medical staff, policy personnel, coding professionals, coding auditors, reporting and business analysts



CMS ICD-10 Website

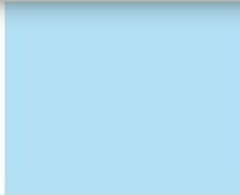
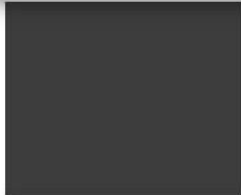
www.cms.gov/icd10

The screenshot shows the CMS.gov website for ICD-10 resources. The navigation bar includes links for Home, About CMS, Newsroom Center, FAQs, Archive, and social media options. A search bar is present with the text "Learn about your healthcare options". The main navigation menu includes Medicare, Medicaid/CHIP, Medicare-Medicaid Coordination, Insurance Oversight, Innovation Center, Regulations and Guidance, Research, Statistics, Data and Systems, and Outreach and Education. The breadcrumb trail is "Home > Medicare > ICD-10 > ICD-10".

On the left side, a list of links is annotated with red circles and arrows pointing to the main content area:

- Latest News** points to [Latest News](#)
- Email Updates** points to [CMS ICD-10 Industry Email Updates](#)
- Provider Resources** points to [Provider Resources](#)
- Payer Resources** points to [Payer Resources](#)
- Vendor Resources** points to [Vendor Resources](#)
- GEMS** points to [2013 ICD-10-CM and GEMs](#)
- ICD-9 Coordination and Maintenance Committee** points to [ICD-9-CM Coordination and Maintenance Committee Meetings](#)

The main content area features a large "CMS ICD-10" logo with the tagline "Official CMS Industry Resources for the ICD-10 Transition" and the URL "www.cms.gov/ICD10". Below the logo, the text reads: "Welcome to the Centers for Medicare & Medicaid Services (CMS) ICD-10 Website. Here you will find resources to help, [Providers](#), [Payers](#), and [Vendors](#) with the U.S. health care industry's transition to ICD-10 on October 1, 2014. As of January 1, 2012, all electronic transactions must use [Version 5010](#) standards, which accommodate ICD-10 codes. New ICD-10 Deadline– October 1, 2014. HHS has [announced](#) the [final rule](#) that delays the ICD-10 compliance date from October 1, 2013 to October 1, 2014. Keep Up to Date" followed by a list of actions: "Sign up for [CMS ICD-10 Industry Email Updates](#)", "Follow @CMSSGov on [Twitter](#)", and "Subscribe to [Latest News Page Watch](#)".



- Two video lectures
 - ICD-10: A Guide for Small and Medium Practices
 - ICD-10: A Guide for Large Practices
- Expert Article
 - Transition to ICD-10: Getting Started



The screenshot shows the Medscape Education website interface. At the top left is the Medscape Education logo. Below it, the text reads: "From Medscape Education Family Medicine", "ICD-10: A Guide for Small and Medium Practices CME", "Daniel J. Duvall, MD, MBA Faculty and Disclosures", and "CME Released: 06/28/2012; Valid for credit through 06/28/2013". On the right side, there is a dropdown menu labeled "Education" and a box stating "Supported by the & Medicaid Services of Health and Human Services". Below these are buttons for "Download Slides", "Transcript", and "CME Information". The main content area features a video player with a play button. The video title is "ICD-10: A Guide for Small and Medium Practices" and the subtitle is "From Planning and Assessment to Implementation and Testing". The presenter is identified as "Daniel J. Duvall, MD, MBA, Medical Officer, Hospital and Ambulatory Policy Group, Centers for Medicare & Medicaid Services, Baltimore, Maryland".

Provider and Payer Implementation Guides

CMS ICD-10
Official CMS Industry Resource for the ICD-10 Transition
www.cms.gov/ICD10

ICD-10 Implementation Guide for Large Practices

Please note the dates in this implementation guide are based on an October 1, 2013, deadline, which HHS has extended to October 1, 2014.

CMS ICD-10
Official CMS Industry Resource for the ICD-10 Transition
www.cms.gov/ICD10

ICD-10 Implementation Guide for Payers

Please note the dates in this implementation guide are based on an October 1, 2013, deadline, which HHS has extended to October 1, 2014.

CMS ICD-10
Official CMS Industry Resource for the ICD-10 Transition
www.cms.gov/ICD10

ICD-10 Implementation Guide for Small and Medium Practices

Please note the dates in this implementation guide are based on an October 1, 2013, deadline, which HHS has extended to October 1, 2014.

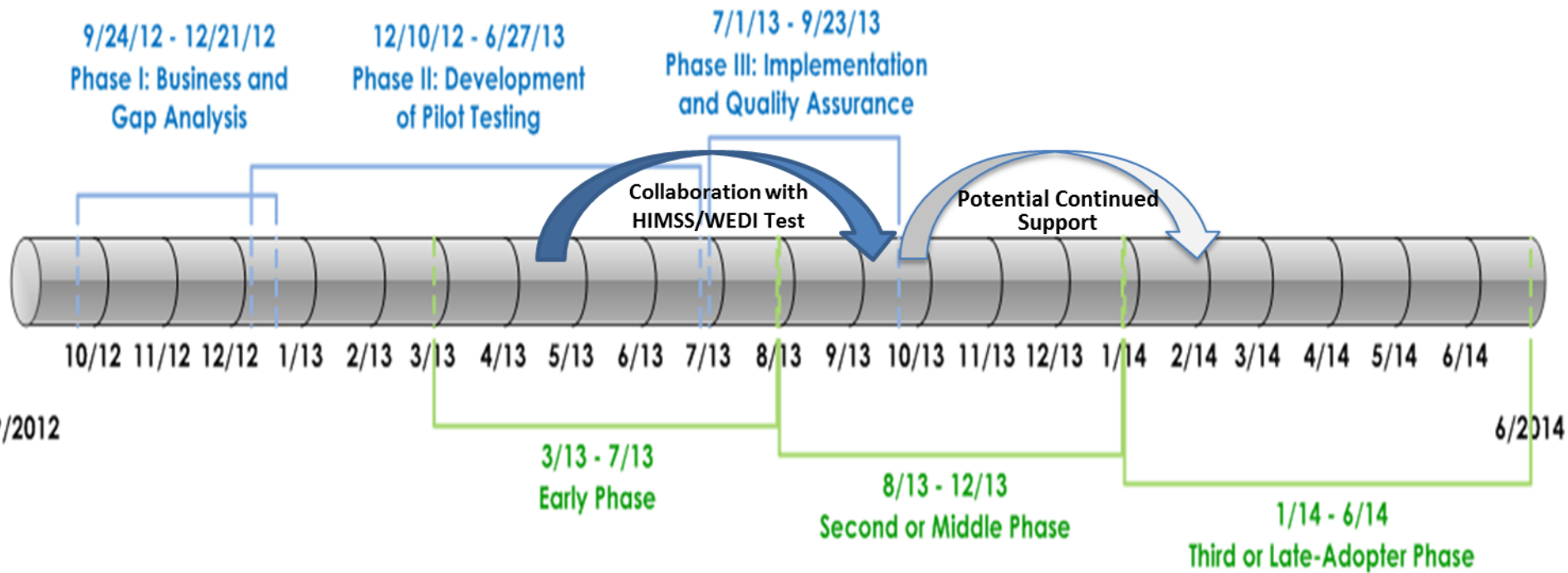
CMS ICD-10
Official CMS Industry Resource for the ICD-10 Transition
www.cms.gov/ICD10

ICD-10 Implementation Guide for Small Hospitals

Please note the dates in this implementation guide are based on an October 1, 2013, deadline, which has extended to October 1, 2014.

Timelines

NGS Pilot for End-to-End Testing of Compliance with Administrative Simplification



HIMSS/WEDI ICD-10 National Pilot Program

[End to End Testing](#) web page

National Provider Call

Continuing Education Information



Continuing Education Information

- Continuing Education credits may be awarded by the following organizations for participation in certain CMS National Provider Calls:
 - American Academy of Professional Coders (AAPC)
 - American Board for Certification in Orthotics, Prosthetics and Pedorthics, Inc. (ABC)
 - American Health Information Management Association (AHIMA)
 - American Medical Billing Association (AMBA)
 - The Commission on Dietetic Registration, the Credentialing Agency for the Academy of Nutrition and Dietetics
 - Professional Association of Health Care Office Management (PAHCOM)
- Visit the [MLN FFS National Provider Calls Continuing Education Credit Notification](#) web page for more details

Questions?

Email your questions to

ICD10-National-Calls@cms.hhs.gov



Evaluate Your Experience with Today's National Provider Call

To ensure that the National Provider Call (NPC) Program continues to be responsive to your needs, we are providing an opportunity for you to evaluate your experience with today's NPC. Evaluations are anonymous and strictly voluntary.

To complete the evaluation, visit <http://npc.blhtech.com/> and select the title for today's call from the menu.

All registrants will also receive a reminder email within two business days of the call. Please disregard this email if you have already completed the evaluation.

We appreciate your feedback!



Thank You

For more information about the MLN, please visit <http://cms.gov/Outreach-and-Education/Medicare-Learning-Network-MLN/MLNGenInfo/index.html>

For more information about the National Provider Call Program, please visit <http://cms.gov/Outreach-and-Education/Outreach/NPC/index.html>

